

10TH STREET, N.E.
(R.O.W. VARIES)

19, SQUARE 3848
BOOK 201, PG 28
D OUTLOTS, L.L.C.

15' FRONT
SETBACK

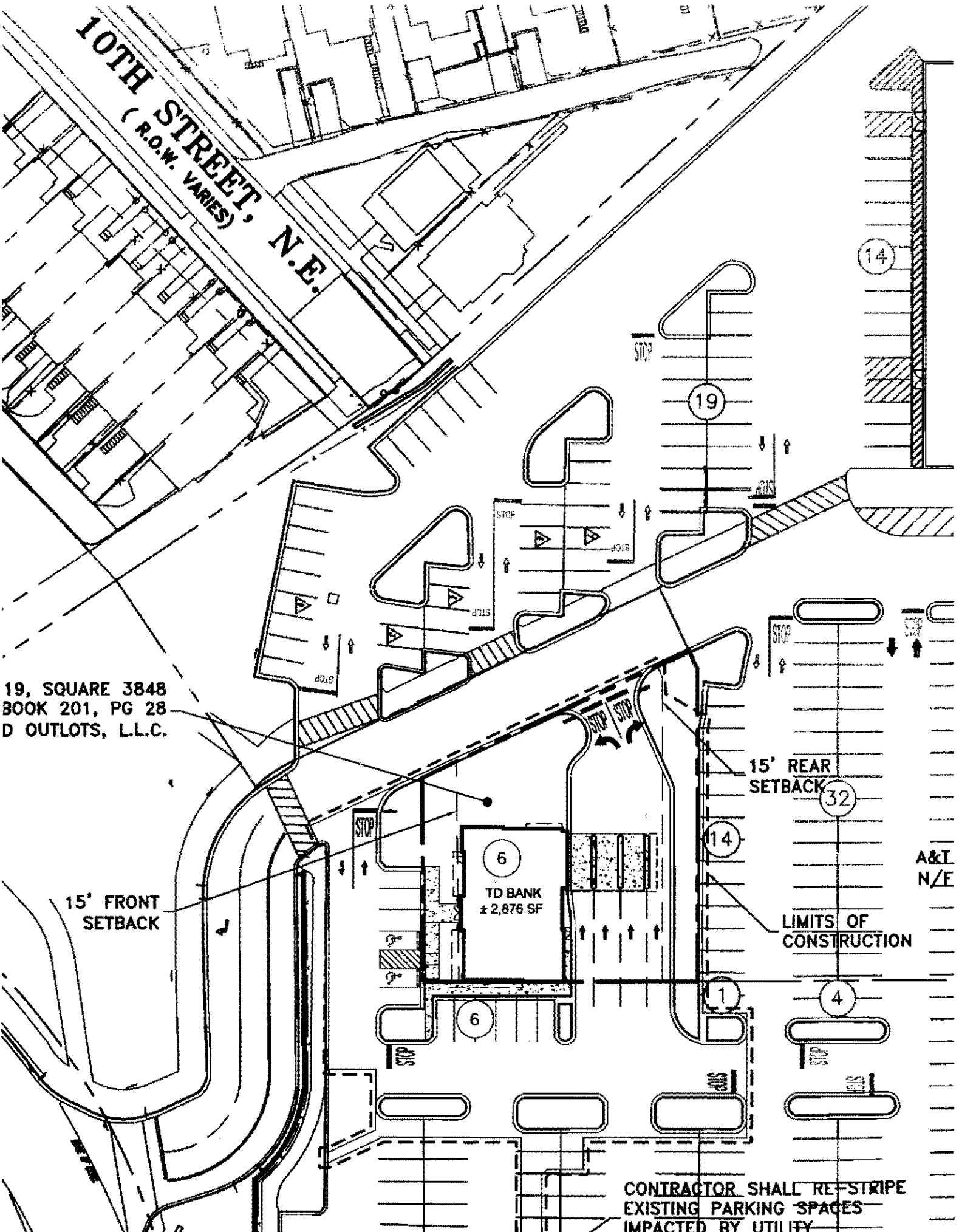
6
TD BANK
± 2,876 SF

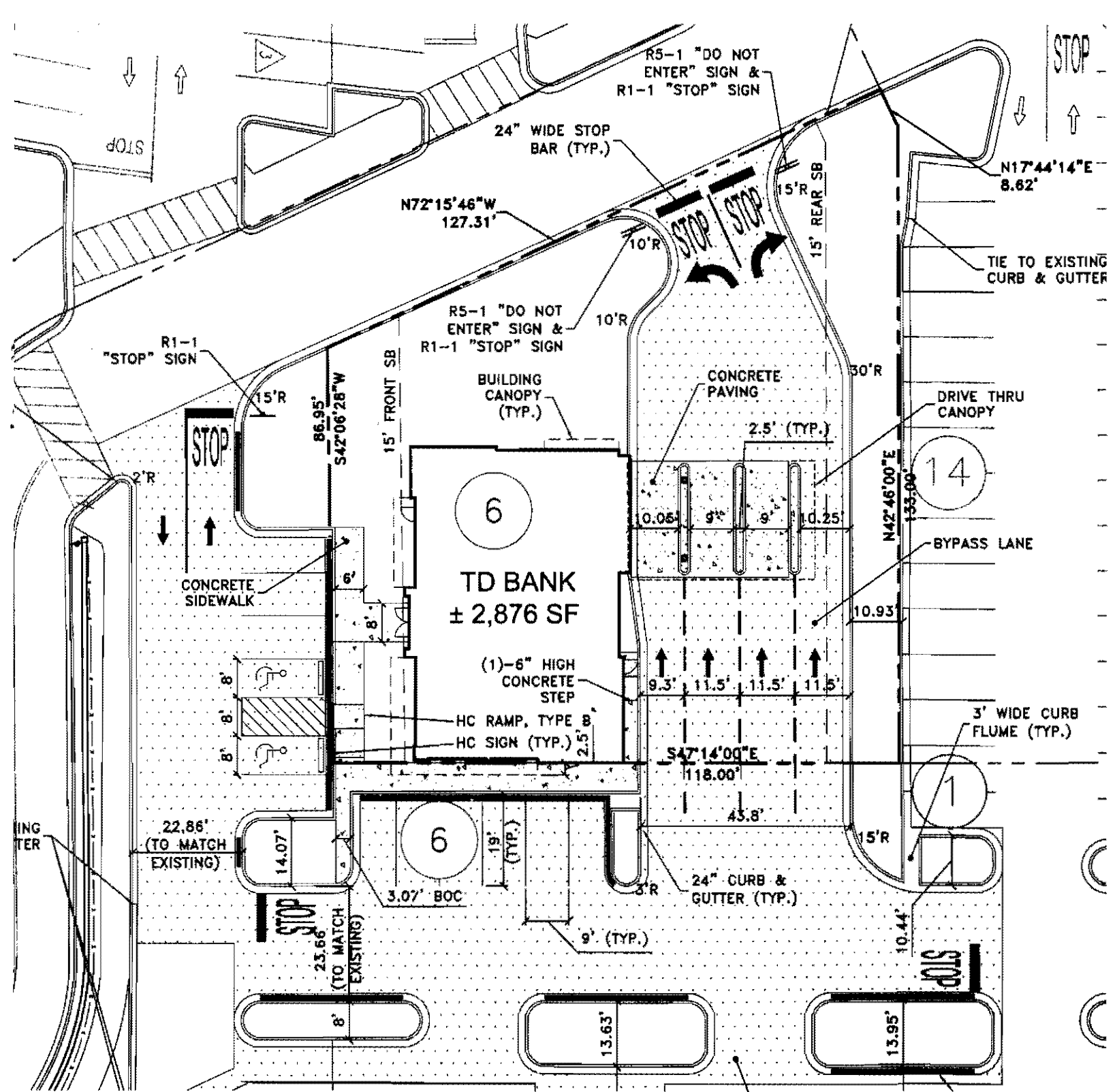
15' REAR
SETBACK

LIMITS OF
CONSTRUCTION

A&T
N/E

CONTRACTOR SHALL RE-STRIPE
EXISTING PARKING SPACES
IMPACTED BY UTILITY





R5-1 "DO NOT ENTER" SIGN & R1-1 "STOP" SIGN

24" WIDE STOP BAR (TYP.)

N72°15'46"W
127.31'

N17°44'14"E
8.62'

TIE TO EXISTING CURB & GUTTER

R5-1 "DO NOT ENTER" SIGN & R1-1 "STOP" SIGN

BUILDING CANOPY (TYP.)

CONCRETE PAVING

DRIVE THRU CANOPY

R1-1 "STOP" SIGN

STOP

6

14

TD BANK
± 2,876 SF

BYPASS LANE

CONCRETE SIDEWALK

(1)-6" HIGH CONCRETE STEP

HC RAMP, TYPE B
HC SIGN (TYP.)

3' WIDE CURB FLUME (TYP.)

22.86'
(TO MATCH EXISTING)

14.07'

6

23.66'
(TO MATCH EXISTING)

STOP

8'

3.07' BOC

24" CURB & GUTTER (TYP.)

9' (TYP.)

13.63'

13.95'

STOP

R5-1 "DO NOT ENTER" SIGN & R1-1 "STOP" SIGN

24" WIDE STOP BAR (TYP.)

N72°15'46"W
127.31'

N17°44'14"E
8.62'

TIE TO EXISTING CURB & GUTTER

R5-1 "DO NOT ENTER" SIGN & R1-1 "STOP" SIGN

BUILDING CANOPY (TYP.)

CONCRETE PAVING

DRIVE THRU CANOPY

R1-1 "STOP" SIGN

STOP

6

14

TD BANK
± 2,876 SF

BYPASS LANE

CONCRETE SIDEWALK

(1)-6" HIGH CONCRETE STEP

HC RAMP, TYPE B
HC SIGN (TYP.)

3' WIDE CURB FLUME (TYP.)

22.86'
(TO MATCH EXISTING)

14.07'

6

23.66'
(TO MATCH EXISTING)

STOP

8'

3.07' BOC

24" CURB & GUTTER (TYP.)

9' (TYP.)

13.63'

13.95'

STOP