

# Pennsylvania Avenue SE, Potomac Avenue SE, and 14<sup>th</sup> Street SE

Transportation Improvements

Public Scoping Meeting

January 31, 2013

# WELCOME



# Agenda

- Purpose of Meeting
- Project Background
- Purpose and Need
- National Environmental Policy Act (NEPA)
- National Historic Preservation Act (NHPA)
- Public Involvement Opportunities
- Concepts
- Next Steps
- Question and Answer Session



# **PROJECT BACKGROUND**

# Project Background

- Project Discussed in:
  - Middle Anacostia Crossings (MAC) Study, Mid-Term Improvements (Project 14), 2005
  - Capitol Hill Transportation Study, 2006
  - District of Columbia Comprehensive Plan (2006)
  - Pennsylvania Avenue SE Corridor Land Development Plan, 2008
- DDOT Initiated an Environmental Assessment in April 2009 that was subsequently put on hold



# **PURPOSE AND NEED**

# Why Is DDOT Evaluating This Intersection?

- The Pennsylvania Avenue SE, Potomac Avenue SE, and 14<sup>th</sup> Street SE intersection has multiple striped crosswalk locations that create pedestrian and driver confusion and conflict points
- Current striped crosswalks provide indirect means to cross Pennsylvania Avenue SE
- Pedestrians have created a more direct path through the grassed median of Pennsylvania Avenue SE. This path is not striped and not included in the pedestrian signal timing

# The Needs for the Project Are:

- Enhance pedestrian safety for residents and multi-modal transit users traveling in and around the Pennsylvania Avenue SE, Potomac Avenue SE, and 14<sup>th</sup> Street SE intersection
- Meet District of Columbia Comprehensive Plan Transportation Planning Elements and Policies investing in Pedestrian Connections as a means to enhance multi-modal use
- Align with Regional and District transportation planning policies to reduce reliance on the automobile through investment at transit centers

A dark blue wavy graphic that spans the width of the slide, positioned at the top. It has a smooth, undulating edge that separates the dark blue header area from the white content area.

# **NATIONAL ENVIRONMENTAL POLICY ACT (NEPA)**



# National Environmental Policy Act (NEPA) Environmental Assessment

- Federal Highway Administration is the lead federal agency for the Transportation NEPA process



# NEPA Project Study Area



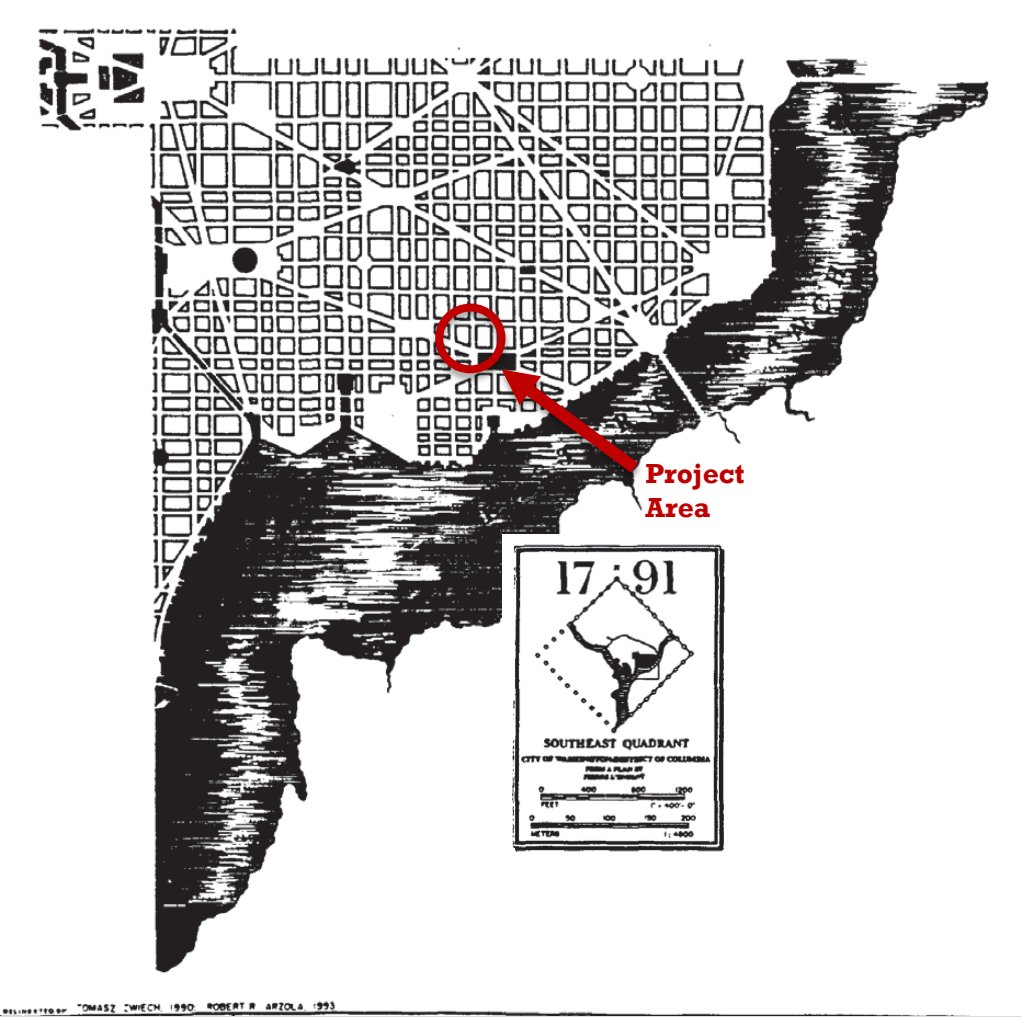
A dark blue wavy graphic that curves across the top of the page, separating the header area from the main content area.

# **NATIONAL HISTORIC PRESERVATION ACT (NHPA)**

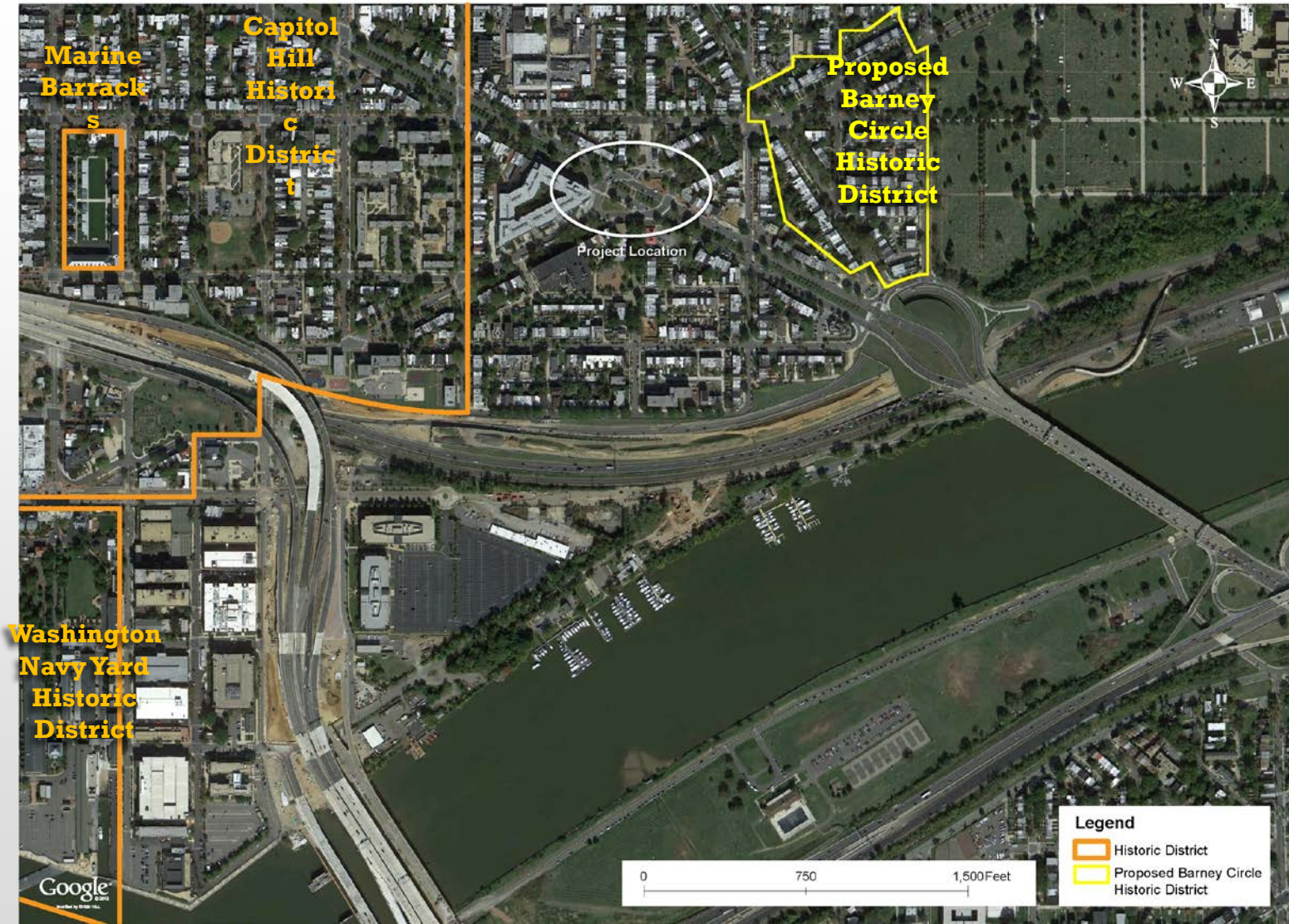
# National Historic Preservation Act (NHPA)

- Section 106 of the NHPA requires consultation with the State Historic Preservation Office and other interested parties
  - Historic properties will be defined
  - Identified historic properties include:
    - The L'Enfant Plan of the City of Washington
    - Capitol Hill Historic District
    - Proposed Barney Circle Historic District
- An Assessment of Effects on historic properties from the Transportation Improvements will be prepared and summarized in the Environmental Assessment
- ***Interested parties are invited to participate***

# L'Enfant Plan of the City of Washington



# Cultural Resources





# **PUBLIC INVOLVEMENT**

# Public Involvement

- **Public Meetings**
  - **Public Meeting #1**
    - **Scoping and Purpose and Need – Tonight**
  - **Public Meeting #2**
    - **Alternatives Review – Spring 2013**
  - **Public Meeting #3**
    - **Public Hearing on EA – Summer 2013**



# Stakeholders

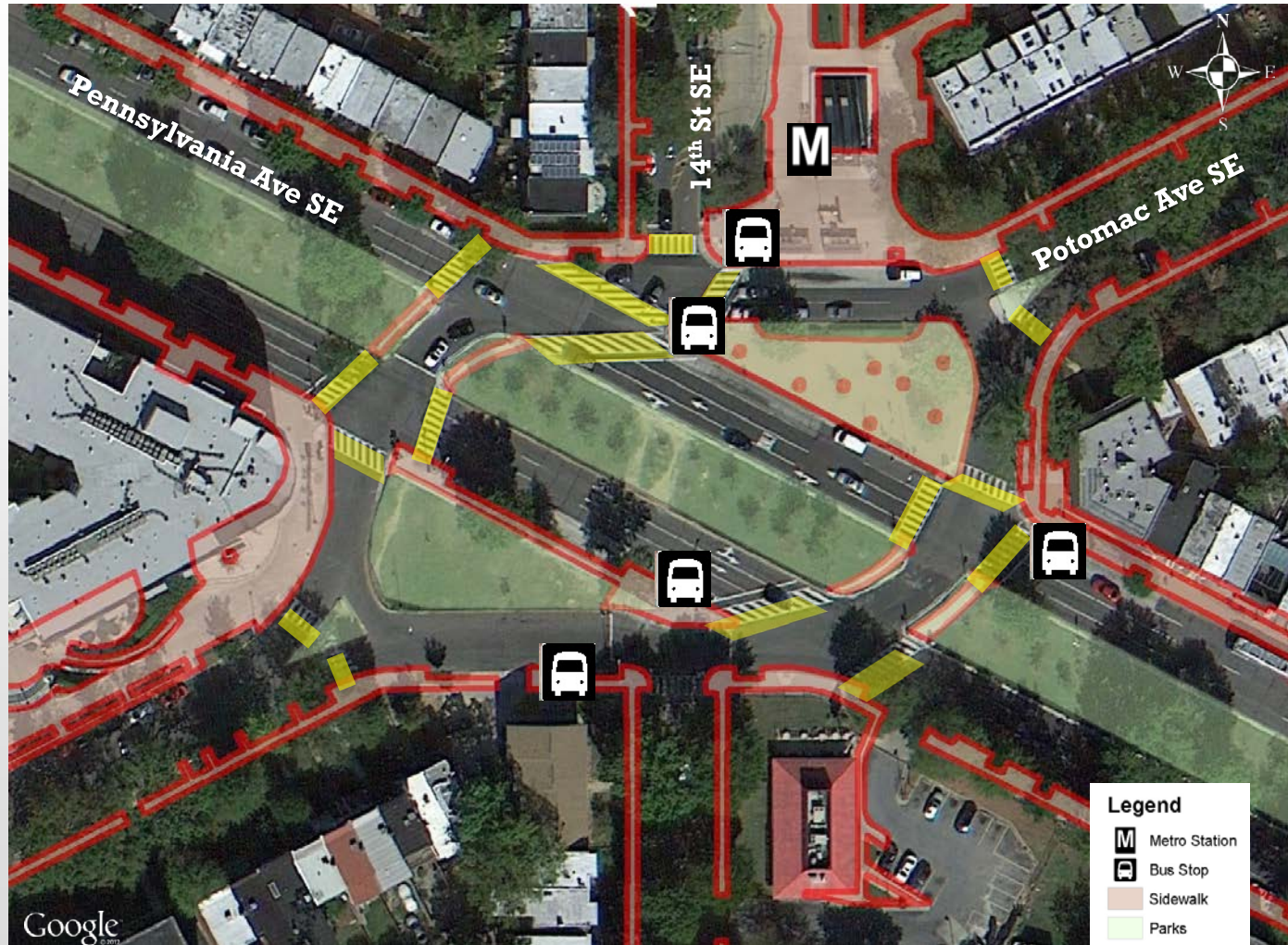
- Residents and Business Owners in Project Area
- Transit Riders, Bicyclists
- Advisory Neighborhood Commission
- Federal Highway Administration
- National Park Service
- DC-State Historic Preservation Office
- National Capitol Planning Commission
- Commission of Fine Arts
- Washington Metropolitan Area Transit Authority

# **CONCEPTS**

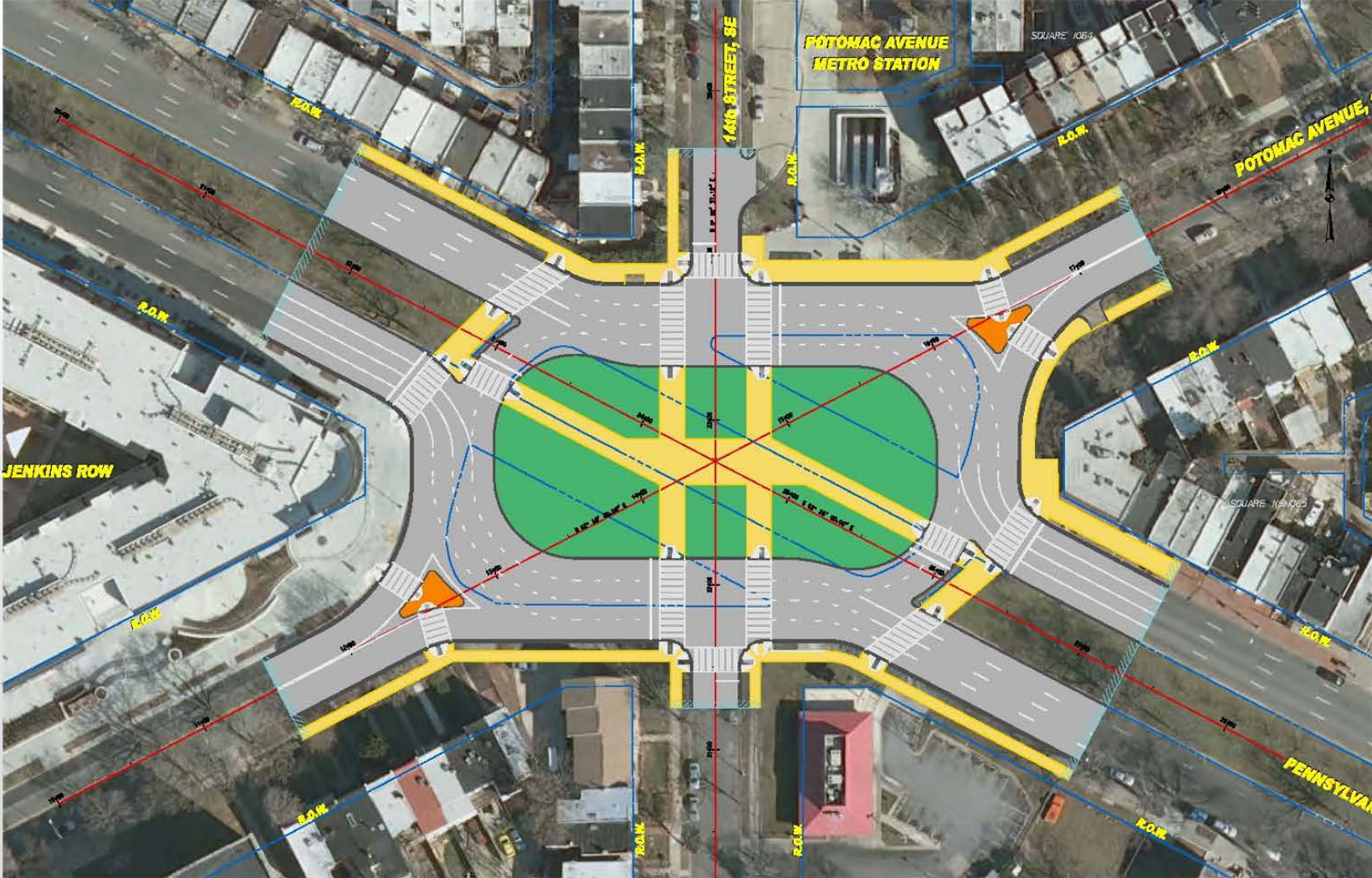
# Potential Concepts

- Improvements to pedestrian crosswalks
- Traffic signal coordination
- Modification to the approach roadways – Potomac Avenue, SE and 14<sup>th</sup> Street, SE
- Redesign and reconfiguration of entire intersection

# Existing Conditions



# Previously Developed Concept



# Concept 1 T-Intersections



# Concept 2 Signalized Oval





**NEXT STEPS**



# Project Schedule

Milestone	Date
<b>Public Meeting #1 – Public Scoping Meeting</b>	<b>Tonight</b>
Alternatives Development	Winter 2013
<b>Public Meeting #2 – Alternatives Review</b>	<b>Spring 2013</b>
Impact Assessment	Spring 2013
Release Environmental Assessment for Public Comments	Spring 2013
Public/Agency Review Period of Environmental Assessment	Spring 2013
<b>Public Meeting #3 - Public Hearing for the Environmental Assessment</b>	<b>Summer 2013</b>
Final NEPA Document and Decision	Summer 2013

# Stay Involved

- Tell Us What You Think
  - Tonight
    - Fill out Comment Form
  - Get on Email Distribution List
    - [www.anacostiawaterfront.org/Penn-Potomac](http://www.anacostiawaterfront.org/Penn-Potomac)
  - Email
    - [pennpotomac@prrbiz.com](mailto:pennpotomac@prrbiz.com)

**QUESTIONS?**