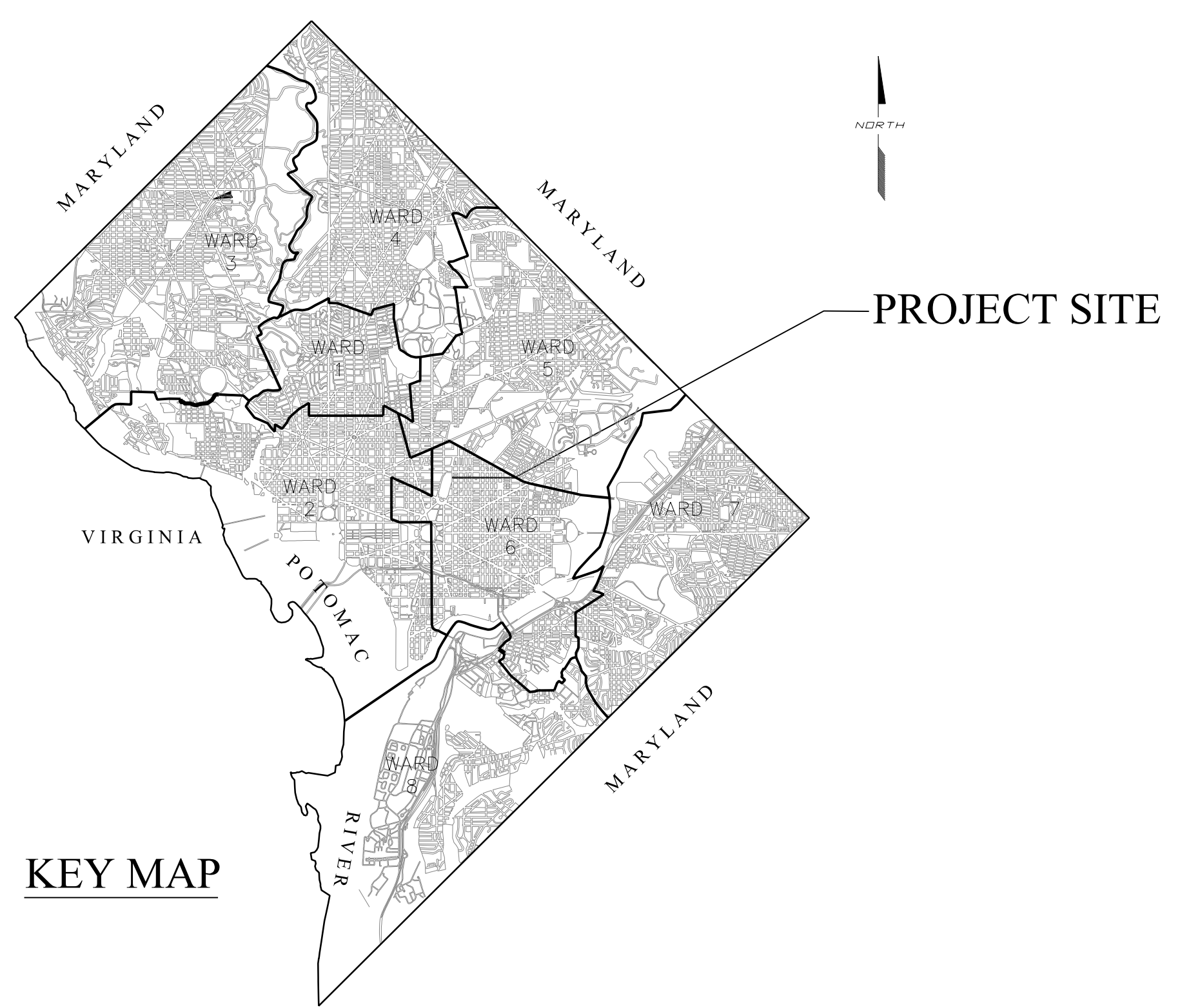


REG	STATE	PROJECT	SHEET NO.	TOTAL SHEETS
2	D.C.	N/A	001	011

DISTRICT OF COLUMBIA DEPARTMENT OF TRANSPORTATION

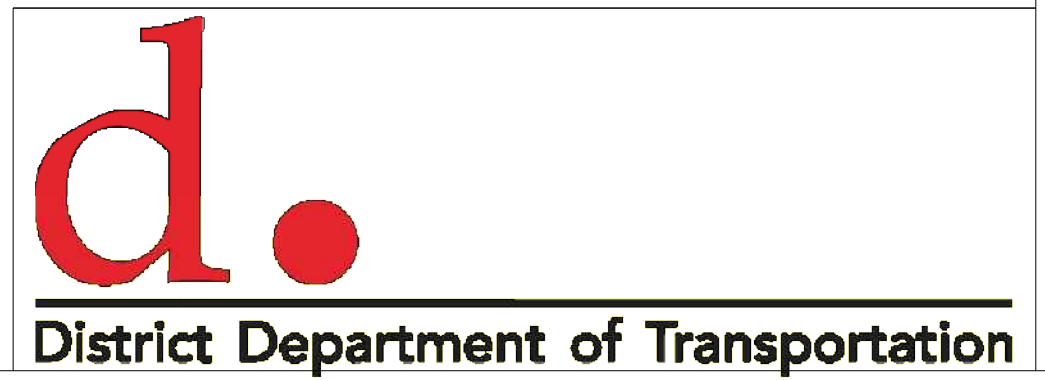
PLANS OF I Street, N.E. Contraflow Bicycle Lane



KEY MAP

LENGTH OF PROJECT = 4,700 FT = 0.89 MILES

**90% SUBMITTAL: NOVEMBER, 2013
NOT FOR CONSTRUCTION**



DISTRICT OF COLUMBIA DEPARTMENT OF TRANSPORTATION	DEPT. OF TRANSPORTATION FEDERAL HIGHWAY ADMINISTRATION
<p>RECOMMENDED FOR APPROVAL:</p> <p>PROGRAM MANAGER IPMA / CHIEF, IPMA SUPPORT DIVISION</p> <p>APPROVED:</p> <p>CHIEF TRANSPORTATION ENGINEER</p> <p>POLICY, PLANNING AND SUSTAINABILITY ADMINISTRATION</p> <p>TRAFFIC OPERATIONS ADMINISTRATION</p> <p>DATE: _____</p>	<p>APPROVED:</p> <p>_____</p> <p style="text-align: center;">DIVISION ADMINISTRATOR</p> <p>DATE: _____</p>

SIGN QUANTITIES

I Street Sign Quantities								
Quantity	Sign Designation	MUTCD/Custom	Sign Type	Use	Sign or Plaque Description	Panel Dimensions (Inches)		Panel Area
						W	H	
16	W11-1	MUTCD	Warning	Traffic	Bike Symbol	30	30	6.25
16	W1-7	MUTCD	Warning	Traffic	Two Direction Arrow	24	12	2
9	R1-1	MUTCD	Regulatory	Bicycle Facilities	Stop	18	18	2
8	R1-4	MUTCD	Regulatory	Bicycle Facilities	All Way	18	6	0.75
9	R1-4 (MOD)	MUTCD	Regulatory	Bicycle Facilities	Bikes	18	6	0.75
2	CUSTOM	Custom	Regulatory	Bicycle Facilities	Except Bicycles	24	12	2
0	CUSTOM	Custom	Warning	Bicycle Facilities	Two Way	18	18	2.25

Total New Signs: 60
Total Square Footage Signs: 167
New Poles 10

90% SUBMISSION: NOVEMBER, 2013

D.C. DEPARTMENT OF TRANSPORTATION
POLICY, PLANNING, AND SUSTAINABILITY ADMINISTRATION
BICYCLE AND PEDESTRIAN PROGRAM

I ST, N.E. BICYCLE LANE PROJECT
FROM 2ND ST, N.E.
TO FLORIDA AVE, N.E.

PROJECT ENG. GPY
DESIGNED BY GPY
CHECKED BY MJG
DRAWN BY GPY
PROJECT MGR. MJG

DIVISION CHIEF

DETAIL SHEET – 1

DATE 11/26/13
FILE _____
SHEET 2 OF 11



NO.	DESCRIPTION	NAME	DATE

REVISIONS

REG	STATE	PROJECT	SHEET NO.	TOTAL SHEETS
2	D.C.	N / A	3	11



MATCH LINE SEE STRIPING PLAN - 2

90% SUBMISSION: NOVEMBER, 2013

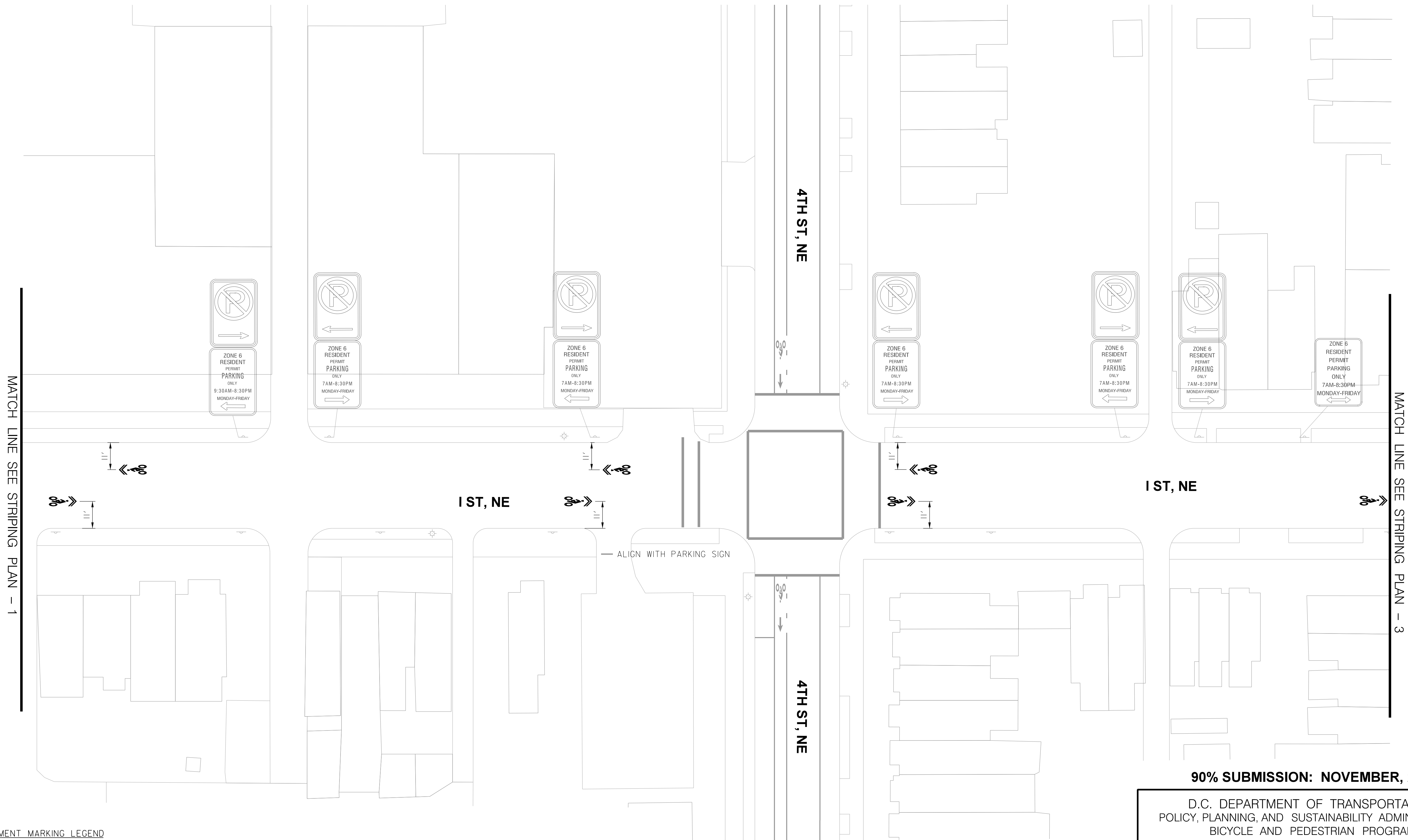
PAVEMENT MARKING LEGEND

- (A) 4" SOLID WHITE REFLECTIVE THERMOPLASTIC PAVEMENT MARKING LINE
- (B) 4" YELLOW THERMOPLASTIC PAVEMENT MARKING - SOLID DOUBLE STRIPE
- (C) 12" SOLID WHITE REFLECTIVE THERMOPLASTIC PAVEMENT MARKING LINE
- (D) 4" WHITE REFLECTIVE THERMOPLASTIC PAVEMENT MARKING (2' STRIPE/4' GAP/2' STRIPE)
- (E) 6" SOLID WHITE REFLECTIVE THERMOPLASTIC PAVEMENT MARKING LINE
- (F) 6" SOLID WHITE REFLECTIVE THERMOPLASTIC PAVEMENT MARKING LINE ALIGNED WITH NO PARKING SIGN



NO.	DESCRIPTION	NAME	DATE
REVISIONS			

D.C. DEPARTMENT OF TRANSPORTATION POLICY, PLANNING, AND SUSTAINABILITY ADMINISTRATION BICYCLE AND PEDESTRIAN PROGRAM		PROJECT ENG. _____ GPY DESIGNED BY _____ GPY CHECKED BY _____ MJG DRAWN BY _____ GPY PROJECT MGR. _____ MJG
1ST, N.E. BICYCLE LANE PROJECT FROM 2ND ST, N.E. TO FLORIDA AVE, N.E.		DIVISION CHIEF DATE 11/26/13 FILE SHEET 3 OF 11
STRIPING AND SIGNING PLAN - 1		



PAVEMENT MARKING LEGEND

- (A) 4" SOLID WHITE REFLECTIVE THERMOPLASTIC PAVEMENT MARKING LINE
- (B) 4" YELLOW THERMOPLASTIC PAVEMENT MARKING - SOLID DOUBLE STRIPE
- (C) 12" SOLID WHITE REFLECTIVE THERMOPLASTIC PAVEMENT MARKING LINE
- (D) 4" WHITE REFLECTIVE THERMOPLASTIC PAVEMENT MARKING (2' STRIPE/4' GAP/2' STRIPE)
- (E) 6" SOLID WHITE REFLECTIVE THERMOPLASTIC PAVEMENT MARKING LINE
- (F) 6" SOLID WHITE REFLECTIVE THERMOPLASTIC PAVEMENT MARKING LINE ALIGNED WITH NO PARKING SIGN



NO.	DESCRIPTION	NAME	DATE

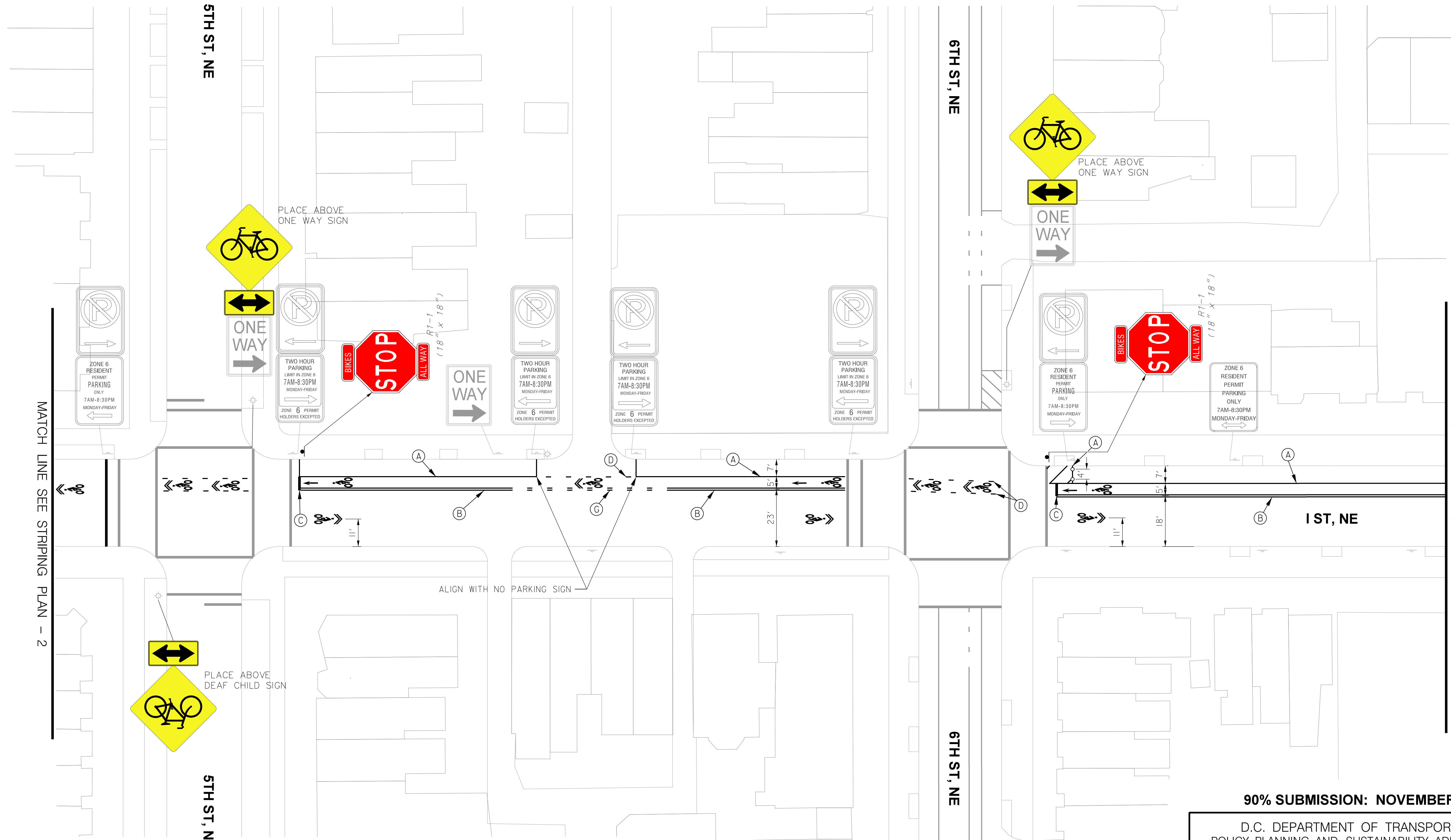
90% SUBMISSION: NOVEMBER, 2013

D.C. DEPARTMENT OF TRANSPORTATION
POLICY, PLANNING, AND SUSTAINABILITY ADMINISTRATION
BICYCLE AND PEDESTRIAN PROGRAM

1ST, N.E. BICYCLE LANE PROJECT
FROM 2ND ST, N.E.
TO FLORIDA AVE, N.E.

STRIPING AND SIGNING PLAN - 2

PROJECT ENG. _____ GPY	DIMENSION CHIEF
DESIGNED BY _____ GPY	DATE 11/26/13
CHECKED BY _____ MJG	FILE _____
DRAWN BY _____ GPY	SHEET 4 OF 11
PROJECT MGR. _____ MJG	



90% SUBMISSION: NOVEMBER, 2013

D.C. DEPARTMENT OF TRANSPORTATION POLICY, PLANNING, AND SUSTAINABILITY ADMINISTRATION BICYCLE AND PEDESTRIAN PROGRAM	
IST, N.E. BICYCLE LANE PROJECT FROM 2ND ST, N.E. TO FLORIDA AVE, N.E.	PROJECT ENG. _____ DESIGNED BY _____ CHECKED BY _____ DRAWN BY _____ PROJECT MGR. _____
STRIPING AND SIGNING PLAN - 3	DIVISION CHIEF
	DATE 11/26/13 FILE _____ SHEET 5 OF 11

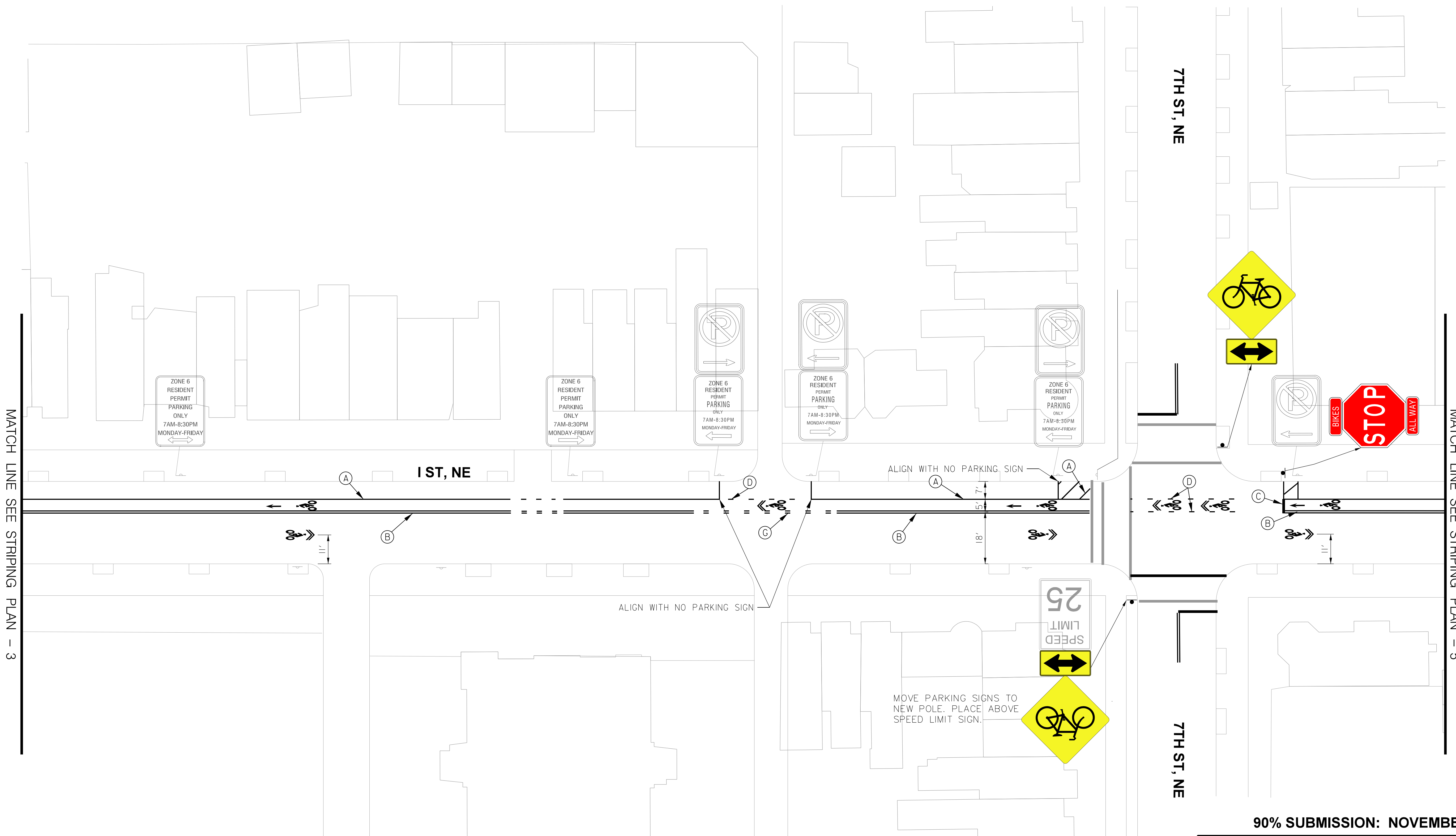
- PAVEMENT MARKING LEGEND
- (A) 4" SOLID WHITE REFLECTIVE THERMOPLASTIC PAVEMENT MARKING LINE
 - (B) 4" YELLOW THERMOPLASTIC PAVEMENT MARKING - SOLID DOUBLE STRIPE
 - (C) 12" SOLID WHITE REFLECTIVE THERMOPLASTIC PAVEMENT MARKING LINE
 - (D) 4" WHITE REFLECTIVE THERMOPLASTIC PAVEMENT MARKING (2' STRIPE/4' GAP/2' STRIPE)
 - (E) 6" SOLID WHITE REFLECTIVE THERMOPLASTIC PAVEMENT MARKING LINE
 - (F) 6" SOLID WHITE REFLECTIVE THERMOPLASTIC PAVEMENT MARKING LINE ALIGNED WITH NO PARKING SIGN
 - (G) 4" YELLOW THERMOPLASTIC PAVEMENT MARKING - DOUBLE DASHED (2' STRIPE/4' GAP/2' STRIPE)



NO.	DESCRIPTION	NAME	DATE
REVISIONS			

MATCH LINE SEE STRIPING PLAN - 2

MATCH LINE SEE STRIPING PLAN - 4



PAVEMENT MARKING LEGEND

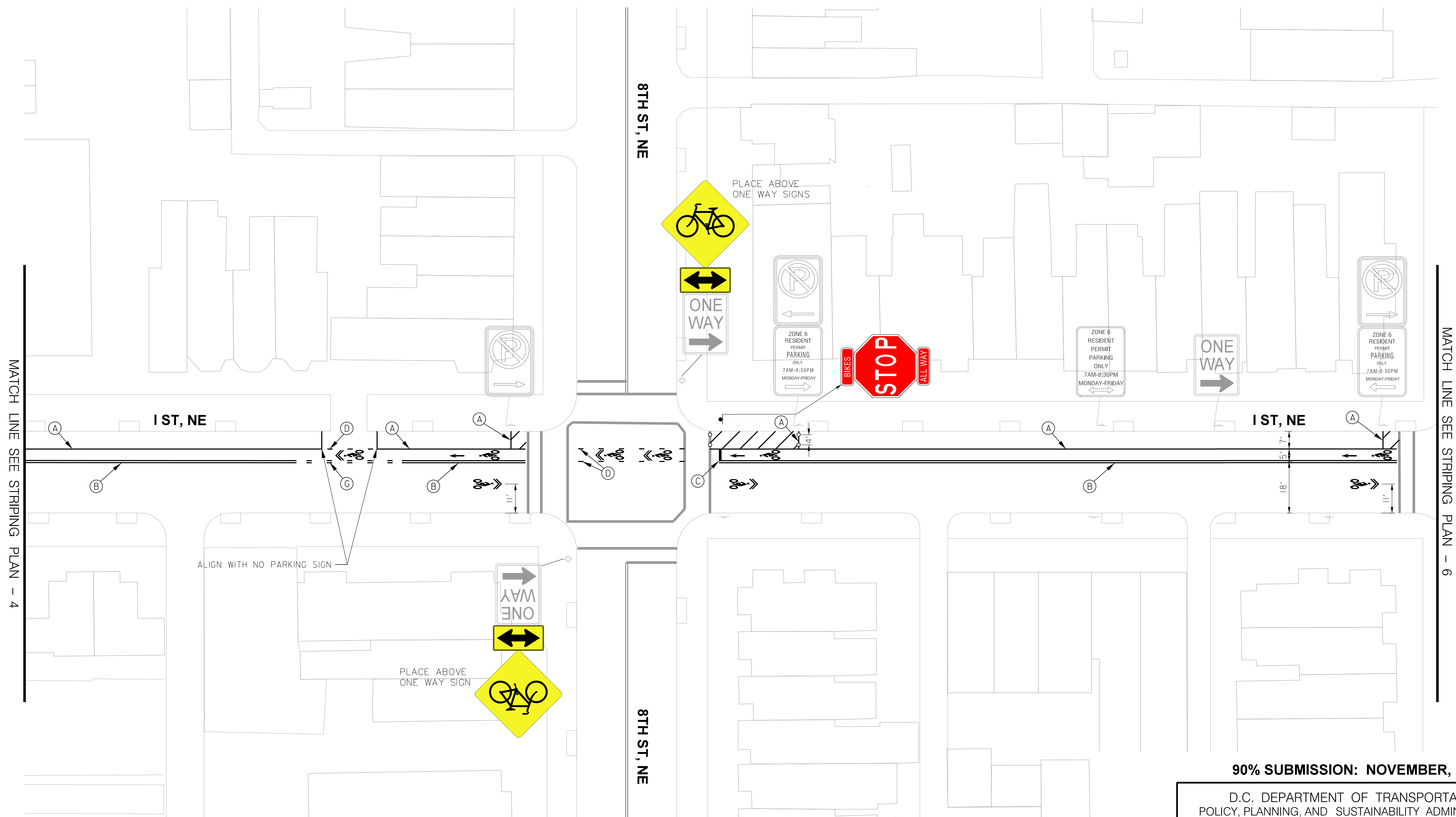
- (A) 4" SOLID WHITE REFLECTIVE THERMOPLASTIC PAVEMENT MARKING LINE
- (B) 4" YELLOW THERMOPLASTIC PAVEMENT MARKING - SOLID DOUBLE STRIPE
- (C) 12" SOLID WHITE REFLECTIVE THERMOPLASTIC PAVEMENT MARKING LINE
- (D) 4" WHITE REFLECTIVE THERMOPLASTIC PAVEMENT MARKING (2' STRIPE/4' GAP/2' STRIPE)
- (E) 6" SOLID WHITE REFLECTIVE THERMOPLASTIC PAVEMENT MARKING LINE
- (F) 6" SOLID WHITE REFLECTIVE THERMOPLASTIC PAVEMENT MARKING LINE ALIGNED WITH NO PARKING SIGN
- (G) 4" YELLOW THERMOPLASTIC PAVEMENT MARKING - DOUBLE DASHED (2' STRIPE/4' GAP/2' STRIPE)



NO.	DESCRIPTION	NAME	DATE
REVISIONS			

90% SUBMISSION: NOVEMBER, 2013

D.C. DEPARTMENT OF TRANSPORTATION POLICY, PLANNING, AND SUSTAINABILITY ADMINISTRATION BICYCLE AND PEDESTRIAN PROGRAM		PROJECT ENG. _____ G.P.Y. DESIGNED BY _____ G.P.Y. CHECKED BY _____ M.J.G. DRAWN BY _____ G.P.Y. PROJECT MGR. _____ M.J.G.
1ST, N.E. BICYCLE LANE PROJECT FROM 2ND ST, N.E. TO FLORIDA AVE, N.E.		DIVISION CHIEF DATE 11/26/13 FILE _____ SHEET 6 OF 11
STRIPING AND SIGNING PLAN - 4		



90% SUBMISSION: NOVEMBER, 2013

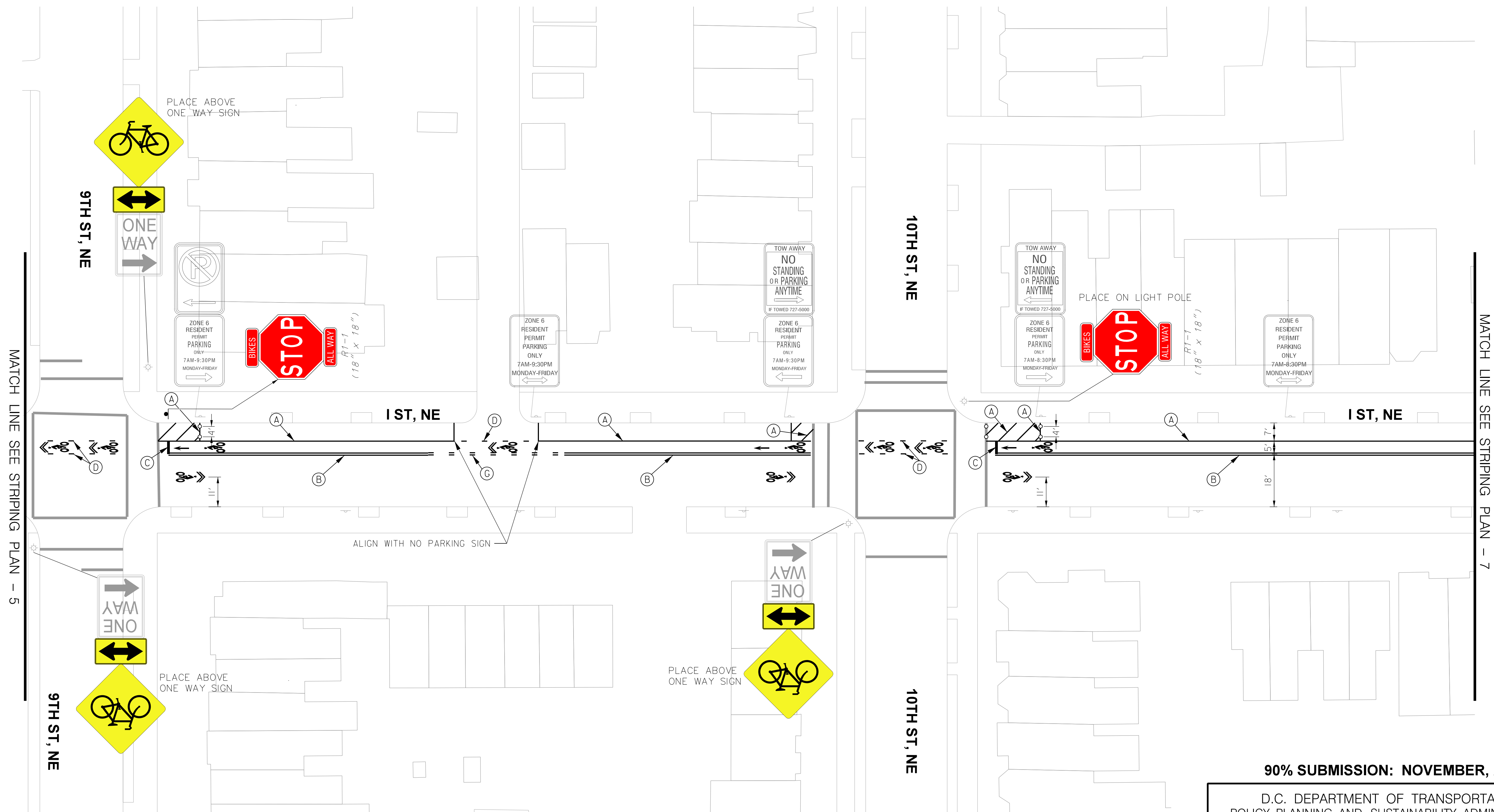
D.C. DEPARTMENT OF TRANSPORTATION POLICY, PLANNING, AND SUSTAINABILITY ADMINISTRATION BICYCLE AND PEDESTRIAN PROGRAM	
IST, N.E. BICYCLE LANE PROJECT FROM 2ND ST, N.E. TO FLORIDA AVE, N.E.	PROJECT ENG. _____ DESIGNED BY _____ CHECKED BY _____ DRAWN BY _____ PROJECT MGR. _____
STRIPING AND SIGNING PLAN - 5	DIVISION CHIEF
	DATE 11/26/13
	FILE _____
	SHEET 7 OF 11

PAVEMENT MARKING LEGEND

- (A) 4" SOLID WHITE REFLECTIVE THERMOPLASTIC PAVEMENT MARKING LINE
- (B) 4" YELLOW THERMOPLASTIC PAVEMENT MARKING - SOLID DOUBLE STRIPE
- (C) 12" SOLID WHITE REFLECTIVE THERMOPLASTIC PAVEMENT MARKING LINE
- (D) 4" WHITE REFLECTIVE THERMOPLASTIC PAVEMENT MARKING (2' STRIPE/4' GAP/2' STRIPE)
- (E) 6" SOLID WHITE REFLECTIVE THERMOPLASTIC PAVEMENT MARKING LINE
- (F) 6" SOLID WHITE REFLECTIVE THERMOPLASTIC PAVEMENT MARKING LINE ALIGNED WITH NO PARKING SIGN
- (G) 4" YELLOW THERMOPLASTIC PAVEMENT MARKING - DOUBLE DASHED (2' STRIPE/4' GAP/2' STRIPE)



NO.	DESCRIPTION	NAME	DATE
REVISIONS			



90% SUBMISSION: NOVEMBER, 2013

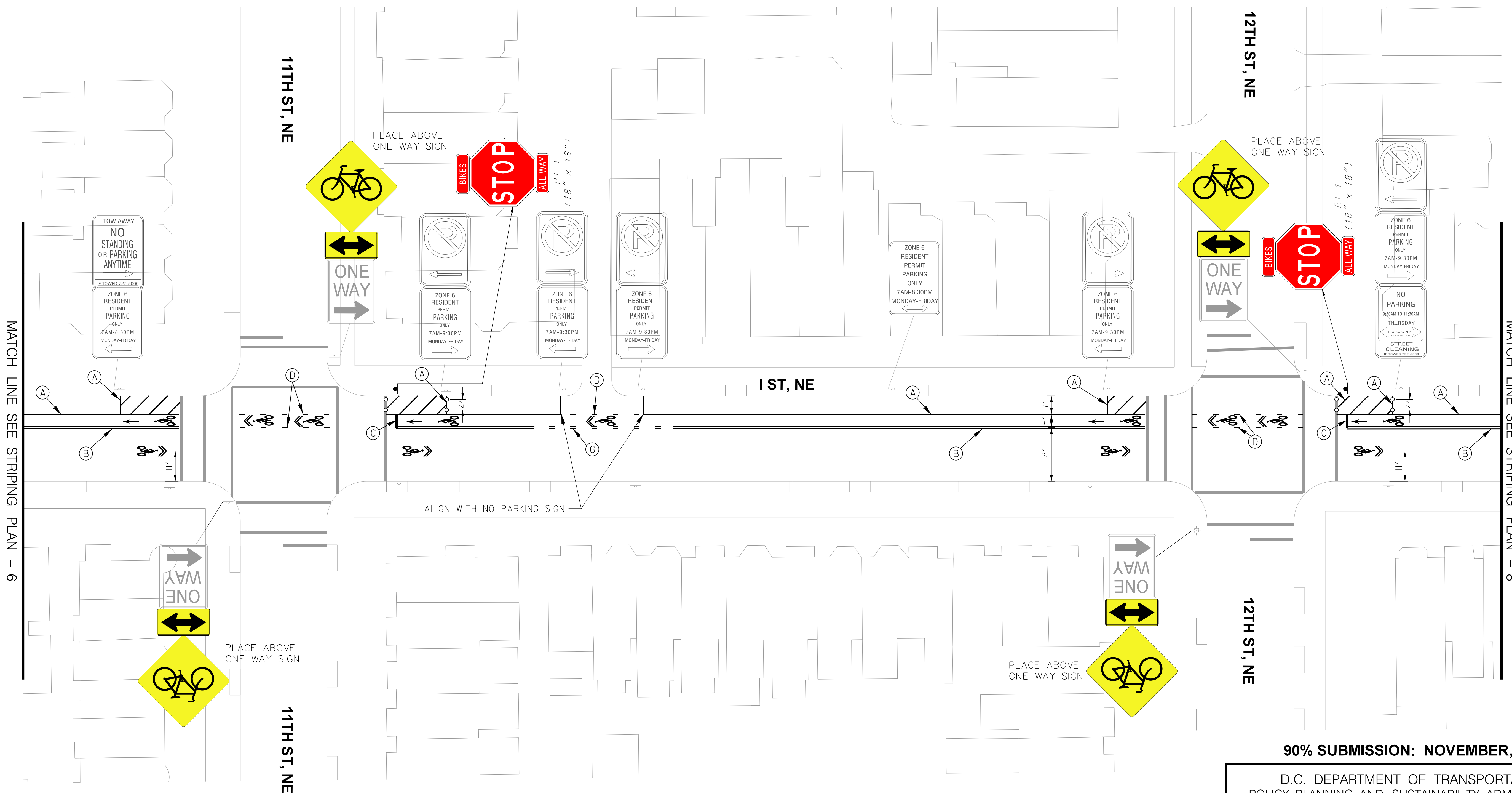
D.C. DEPARTMENT OF TRANSPORTATION POLICY, PLANNING, AND SUSTAINABILITY ADMINISTRATION BICYCLE AND PEDESTRIAN PROGRAM	
1 ST, N.E. BICYCLE LANE PROJECT FROM 2ND ST, N.E. TO FLORIDA AVE, N.E.	PROJECT ENG. _____ GPY DESIGNED BY _____ GPY CHECKED BY _____ MJG DRAWN BY _____ GPY PROJECT MGR. _____ MJG
STRIPING AND SIGNING PLAN - 6	DIVISION CHIEF
	DATE 11/26/13
	FILE _____
	SHEET 8 OF 11

PAVEMENT MARKING LEGEND

- (A) 4" SOLID WHITE REFLECTIVE THERMOPLASTIC PAVEMENT MARKING LINE
- (B) 4" YELLOW THERMOPLASTIC PAVEMENT MARKING - SOLID DOUBLE STRIPE
- (C) 12" SOLID WHITE REFLECTIVE THERMOPLASTIC PAVEMENT MARKING LINE
- (D) 4" WHITE REFLECTIVE THERMOPLASTIC PAVEMENT MARKING (2' STRIPE/4' GAP/2' STRIPE)
- (E) 6" SOLID WHITE REFLECTIVE THERMOPLASTIC PAVEMENT MARKING LINE
- (F) 6" SOLID WHITE REFLECTIVE THERMOPLASTIC PAVEMENT MARKING LINE ALIGNED WITH NO PARKING SIGN
- (G) 4" YELLOW THERMOPLASTIC PAVEMENT MARKING - DOUBLE DASHED (2' STRIPE/4' GAP/2' STRIPE)



NO.	DESCRIPTION	NAME	DATE
REVISIONS			



90% SUBMISSION: NOVEMBER, 2013

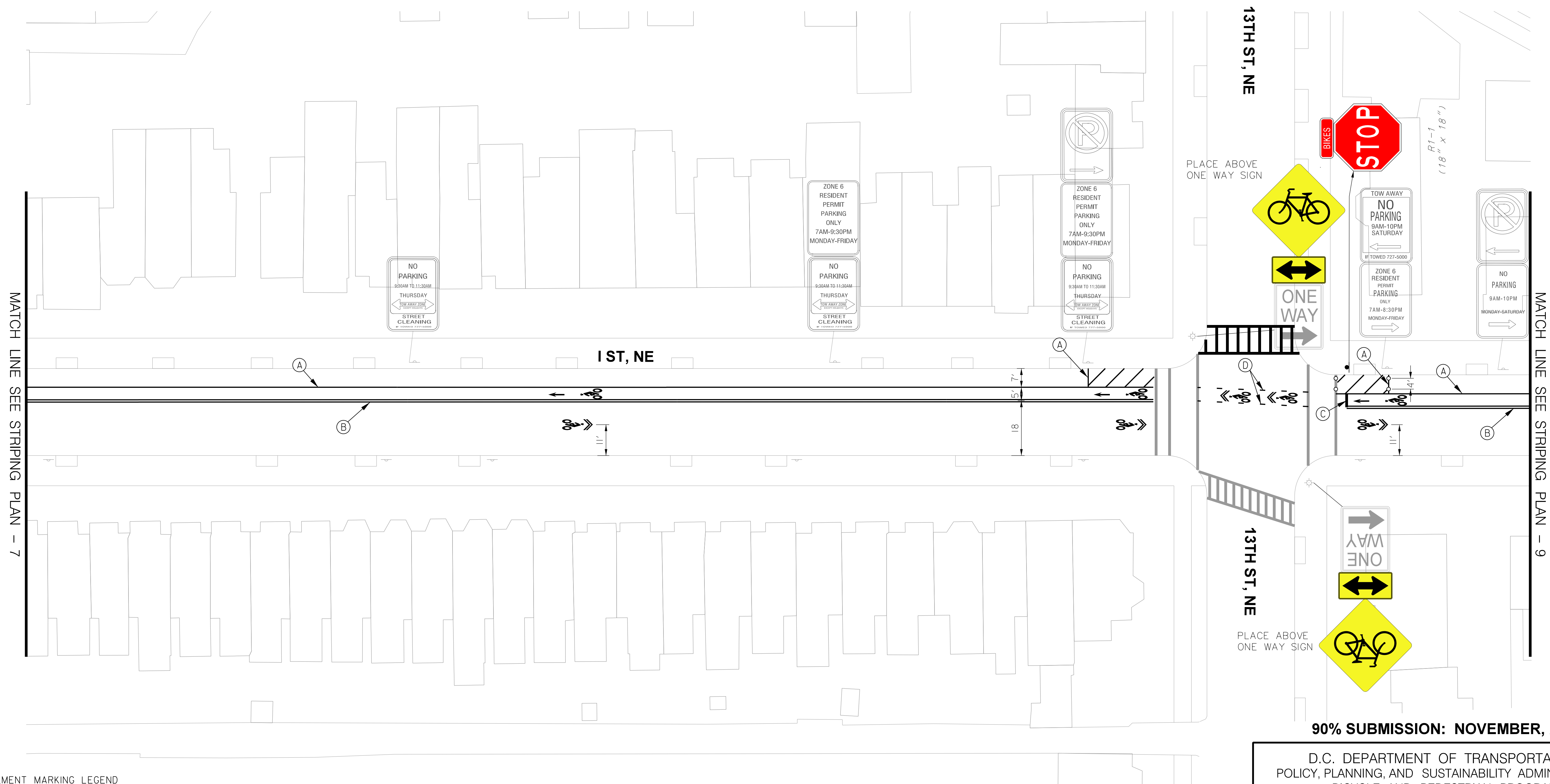
PAVEMENT MARKING LEGEND

- (A) 4" SOLID WHITE REFLECTIVE THERMOPLASTIC PAVEMENT MARKING LINE
- (B) 4" YELLOW THERMOPLASTIC PAVEMENT MARKING - SOLID DOUBLE STRIPE
- (C) 12" SOLID WHITE REFLECTIVE THERMOPLASTIC PAVEMENT MARKING LINE
- (D) 4" WHITE REFLECTIVE THERMOPLASTIC PAVEMENT MARKING (2' STRIPE/4' GAP/2' STRIPE)
- (E) 6" SOLID WHITE REFLECTIVE THERMOPLASTIC PAVEMENT MARKING LINE
- (F) 6" SOLID WHITE REFLECTIVE THERMOPLASTIC PAVEMENT MARKING LINE ALIGNED WITH NO PARKING SIGN
- (G) 4" YELLOW THERMOPLASTIC PAVEMENT MARKING - DOUBLE DASHED (2' STRIPE/4' GAP/2' STRIPE)



NO.	DESCRIPTION	NAME	DATE

D.C. DEPARTMENT OF TRANSPORTATION POLICY, PLANNING, AND SUSTAINABILITY ADMINISTRATION BICYCLE AND PEDESTRIAN PROGRAM	
1ST, N.E. BICYCLE LANE PROJECT FROM 2ND ST, N.E. TO FLORIDA AVE, N.E.	PROJECT ENG. _____ DESIGNED BY _____ CHECKED BY _____ DRAWN BY _____ PROJECT MGR. _____
STRIPING AND SIGNING PLAN - 7	DIVISION CHIEF
	DATE 11/26/13
	FILE _____
	SHEET 9 OF 11



PAVEMENT MARKING LEGEND

- (A) 4" SOLID WHITE REFLECTIVE THERMOPLASTIC PAVEMENT MARKING LINE
- (B) 4" YELLOW THERMOPLASTIC PAVEMENT MARKING - SOLID DOUBLE STRIPE
- (C) 12" SOLID WHITE REFLECTIVE THERMOPLASTIC PAVEMENT MARKING LINE
- (D) 4" WHITE REFLECTIVE THERMOPLASTIC PAVEMENT MARKING (2' STRIPE/4' GAP/2' STRIPE)
- (E) 6" SOLID WHITE REFLECTIVE THERMOPLASTIC PAVEMENT MARKING LINE
- (F) 6" SOLID WHITE REFLECTIVE THERMOPLASTIC PAVEMENT MARKING LINE ALIGNED WITH NO PARKING SIGN
- (G) 4" YELLOW THERMOPLASTIC PAVEMENT MARKING - DOUBLE DASHED (2' STRIPE/4' GAP/2' STRIPE)

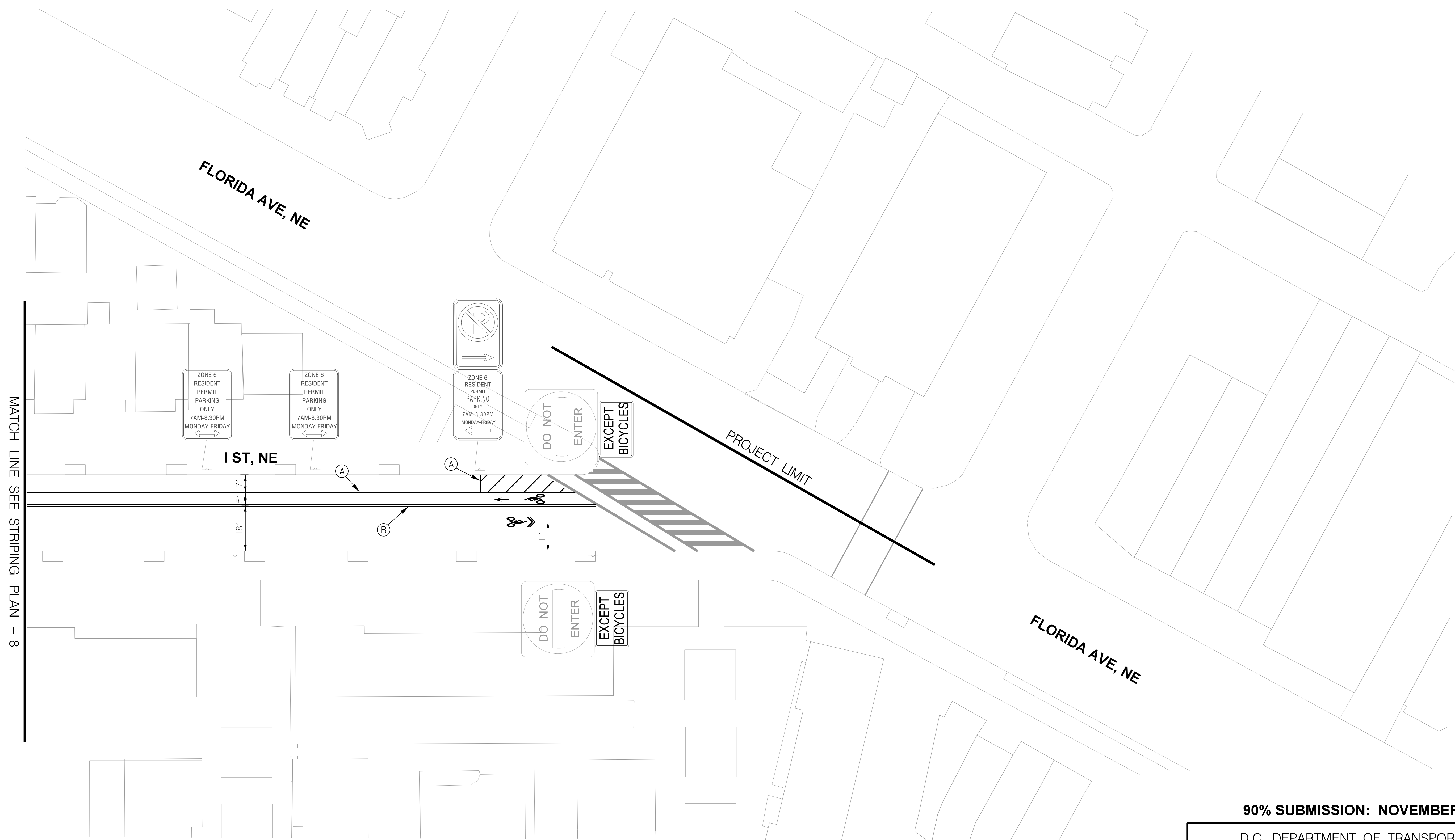


NO.	DESCRIPTION	NAME	DATE
REVISIONS			

90% SUBMISSION: NOVEMBER, 2013

D.C. DEPARTMENT OF TRANSPORTATION POLICY, PLANNING, AND SUSTAINABILITY ADMINISTRATION BICYCLE AND PEDESTRIAN PROGRAM	
1ST, N.E. BICYCLE LANE PROJECT FROM 2ND ST, N.E. TO FLORIDA AVE, N.E.	PROJECT ENG. _____ G.P.Y. DESIGNED BY _____ G.P.Y. CHECKED BY _____ M.J.G. DRAWN BY _____ G.P.Y. PROJECT MGR. _____ M.J.G.
STRIPING AND SIGNING PLAN - 8	DIVISION CHIEF DATE 11/26/13 FILE SHEET 10 OF 11

REG	STATE	PROJECT	SHEET NO.	TOTAL SHEETS
2	D.C.	N / A	11	11



PAVEMENT MARKING LEGEND

- (A) 4" SOLID WHITE REFLECTIVE THERMOPLASTIC PAVEMENT MARKING LINE
- (B) 4" YELLOW THERMOPLASTIC PAVEMENT MARKING - SOLID DOUBLE STRIPE
- (C) 12" SOLID WHITE REFLECTIVE THERMOPLASTIC PAVEMENT MARKING LINE
- (D) 4" WHITE REFLECTIVE THERMOPLASTIC PAVEMENT MARKING (2' STRIPE/4' GAP/2' STRIPE)
- (E) 6" SOLID WHITE REFLECTIVE THERMOPLASTIC PAVEMENT MARKING LINE
- (F) 6" SOLID WHITE REFLECTIVE THERMOPLASTIC PAVEMENT MARKING LINE ALIGNED WITH NO PARKING SIGN
- (G) 4" YELLOW THERMOPLASTIC PAVEMENT MARKING - DOUBLE DASHED (2' STRIPE/4' GAP/2' STRIPE)



NO.	DESCRIPTION	NAME	DATE

90% SUBMISSION: NOVEMBER, 2013

D.C. DEPARTMENT OF TRANSPORTATION POLICY, PLANNING, AND SUSTAINABILITY ADMINISTRATION BICYCLE AND PEDESTRIAN PROGRAM	
1ST, N.E. BICYCLE LANE PROJECT FROM 2ND ST, N.E. TO FLORIDA AVE, N.E.	PROJECT ENG. _____ GPY DESIGNED BY _____ GPY CHECKED BY _____ MJG DRAWN BY _____ GPY PROJECT MGR. _____ MJG
STRIPING AND SIGNING PLAN - 9	DIVISION CHIEF DATE: 11/26/13 FILE: SHEET 11 OF 11