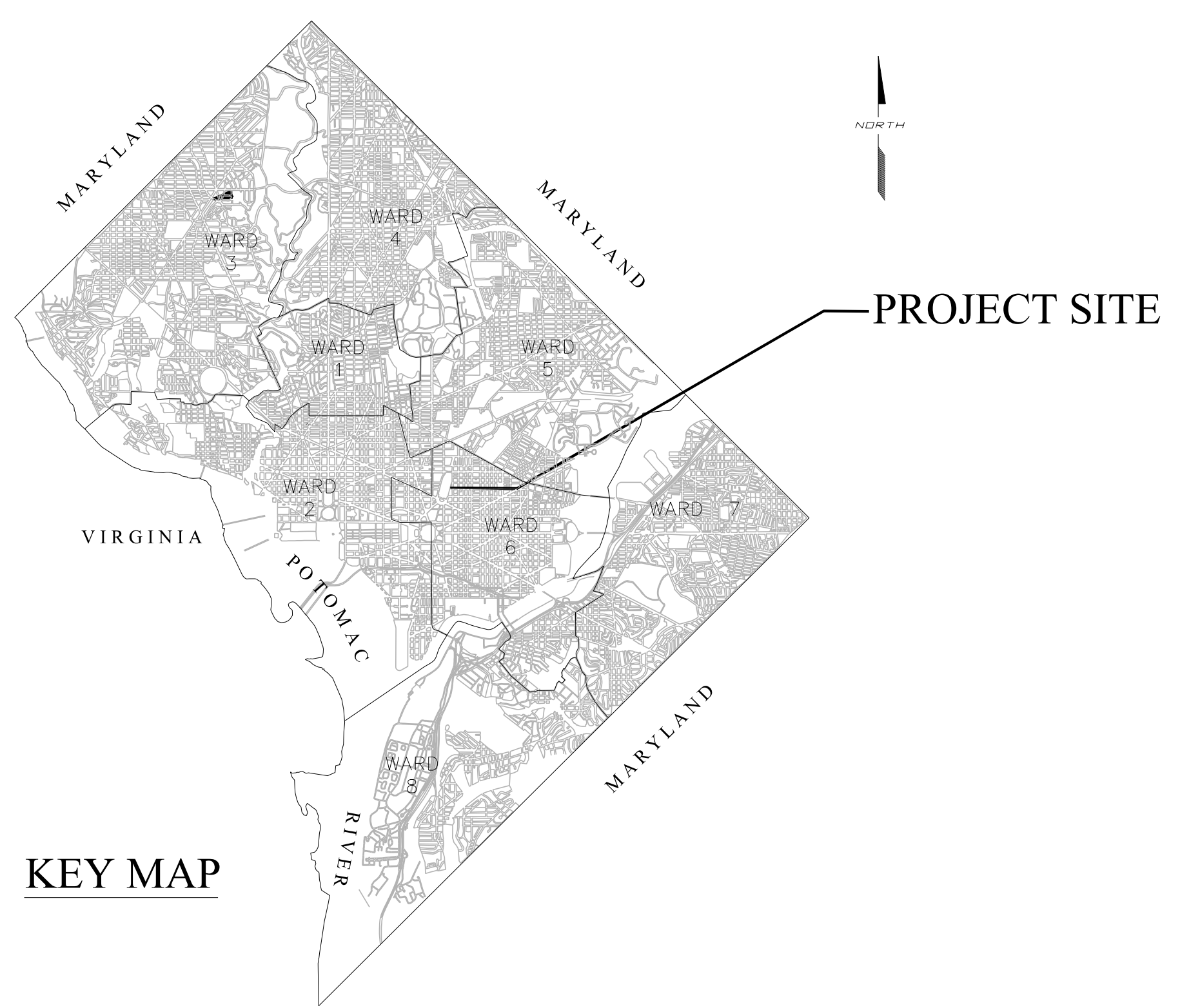


REG	STATE	PROJECT	SHEET NO.	TOTAL SHEETS
2	D.C.	N/A	001	011

# DISTRICT OF COLUMBIA DEPARTMENT OF TRANSPORTATION

## PLANS OF G Street, N.E. Contraflow Bicycle Lane



KEY MAP

LENGTH OF PROJECT = 4,750 FT = 0.90 MILES

**90% SUBMITTAL: NOVEMBER, 2013  
NOT FOR CONSTRUCTION**



DISTRICT OF COLUMBIA DEPARTMENT OF TRANSPORTATION	DEPT. OF TRANSPORTATION FEDERAL HIGHWAY ADMINISTRATION
RECOMMENDED FOR APPROVAL: _____ PROGRAM MANAGER IPMA / CHIEF, IPMA SUPPORT DIVISION APPROVED: _____ CHIEF TRANSPORTATION ENGINEER POLICY, PLANNING AND SUSTAINABILITY ADMINISTRATION _____ TRAFFIC OPERATIONS ADMINISTRATION DATE: _____	APPROVED: _____ DIVISION ADMINISTRATOR DATE: _____

SIGN QUANTITIES

G Street Sign Quantities								
Quantity	Sign Designation	MUTCD/Custom	Sign Type	Use	Sign or Plaque Description	Panel Dimensions (Inches)		Panel Area
						W	H	
20	W11-1	MUTCD	Warning	Traffic	Bike Symbol	30	30	6.25
18	W1-7	MUTCD	Warning	Traffic	Two Direction Arrow	24	12	2
1	R6-1L	MUTCD	Regulatory	Traffic	One Way, Left Arrow	36	12	3
12	R1-1	MUTCD	Regulatory	Bicycle Facilities	Stop	18	18	2
11	R1-4	MUTCD	Regulatory	Bicycle Facilities	All Way	18	6	0.75
12	R1-4 (MOD)	MUTCD	Regulatory	Bicycle Facilities	Bikes	18	6	0.75
1	R7-1	MUTCD	Regulatory	Parking	No Parking, Left Arrow	12	18	1.5
1	R7-2	MUTCD	Regulatory	Parking	RPP Zone 6	12	18	1.5
4	CUSTOM	Custom	Regulatory	Bicycle Facilities	Except Bicycles	24	12	2
2	CUSTOM	Custom	Warning	Bicycle Facilities	Two Way	18	18	2.25

**Total New Signs: 82**  
**Total Square Footage Signs: 215**  
**New Poles 16**

**90% SUBMISSION: NOVEMBER, 2013**

D.C. DEPARTMENT OF TRANSPORTATION  
POLICY, PLANNING, AND SUSTAINABILITY ADMINISTRATION  
BICYCLE AND PEDESTRIAN PROGRAM

G ST, N.E. BICYCLE LANE PROJECT  
FROM 2ND ST, N.E.  
TO MARYLAND AVE, N.E.

PROJECT ENG. GPY  
DESIGNED BY GPY  
CHECKED BY MJG  
DRAWN BY GPY  
PROJECT MGR. MJG

DIVISION CHIEF

DETAIL SHEET – 1

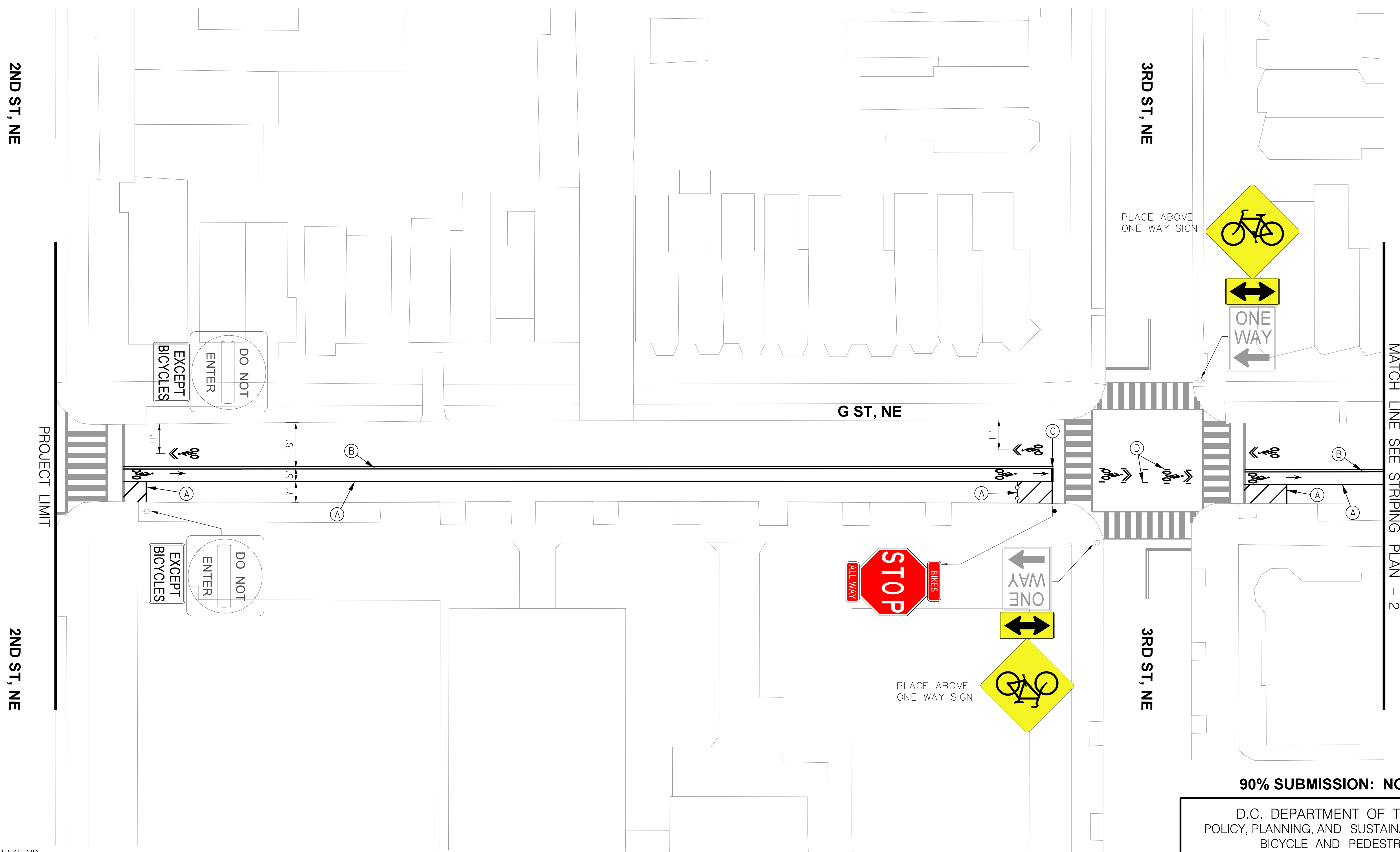
DATE 11/26/13  
FILE \_\_\_\_\_  
SHEET 2 OF 11



NO.	DESCRIPTION	NAME	DATE

REVISIONS

REG	STATE	PROJECT	SHEET NO.	TOTAL SHEETS
2	D.C.	N / A	3	11



- PAVEMENT MARKING LEGEND
- (A) 4" SOLID WHITE REFLECTIVE THERMOPLASTIC PAVEMENT MARKING LINE
  - (B) 4" YELLOW THERMOPLASTIC PAVEMENT MARKING - SOLID DOUBLE STRIPE
  - (C) 12" SOLID WHITE REFLECTIVE THERMOPLASTIC PAVEMENT MARKING LINE
  - (D) 4" WHITE REFLECTIVE THERMOPLASTIC PAVEMENT MARKING (2' STRIPE/4' GAP/2' STRIPE)
  - (E) 6" SOLID WHITE REFLECTIVE THERMOPLASTIC PAVEMENT MARKING LINE
  - (F) 6" SOLID WHITE REFLECTIVE THERMOPLASTIC PAVEMENT MARKING LINE ALIGNED WITH NO PARKING SIGN



NO.	DESCRIPTION	NAME	DATE
REVISIONS			

**90% SUBMISSION: NOVEMBER, 2013**

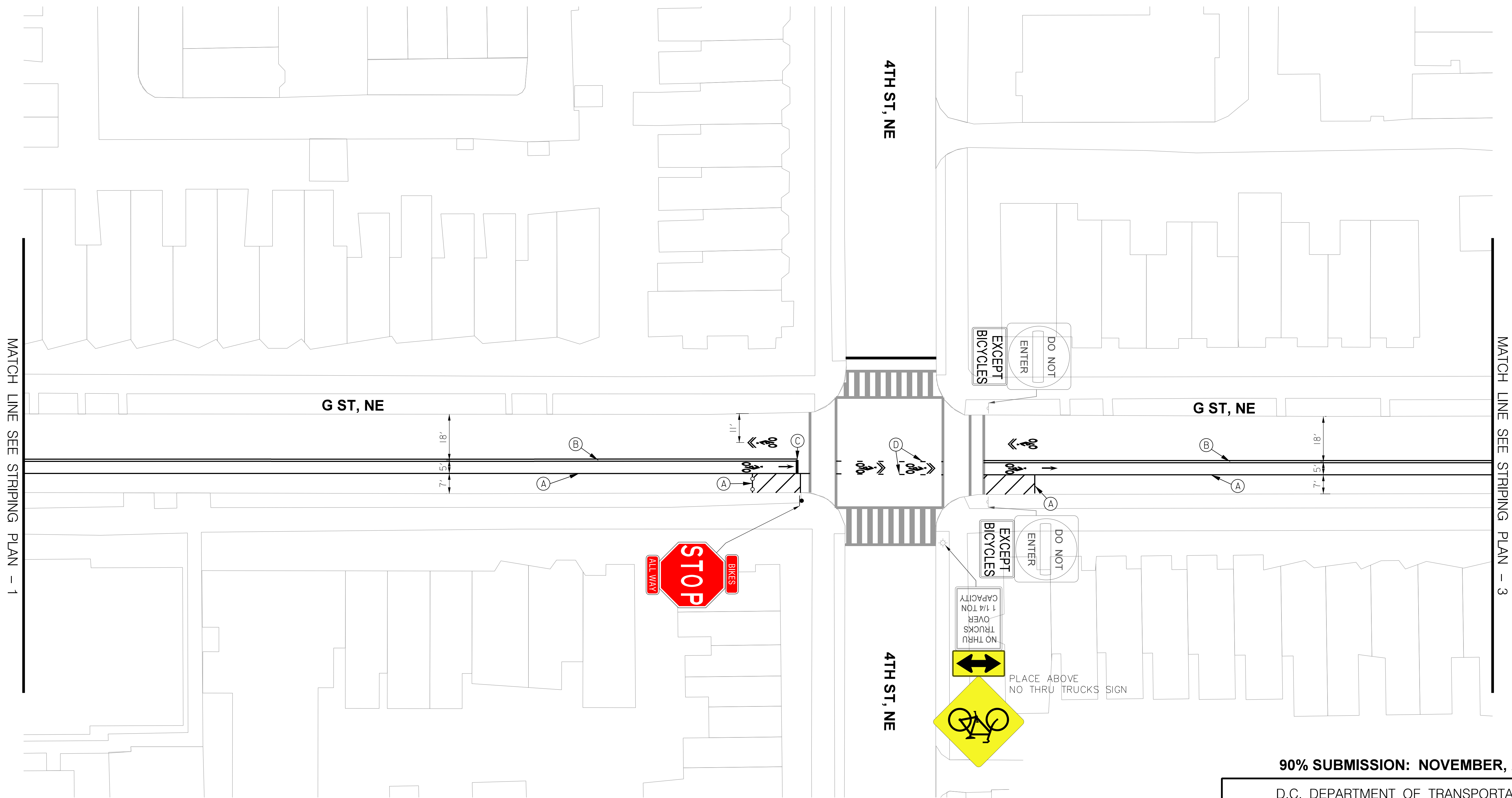
D.C. DEPARTMENT OF TRANSPORTATION  
POLICY, PLANNING, AND SUSTAINABILITY ADMINISTRATION  
BICYCLE AND PEDESTRIAN PROGRAM

G ST, N.E. BICYCLE LANE PROJECT  
FROM 2ND ST, N.E.  
TO MARYLAND AVE, N.E.

STRIPING AND SIGNING PLAN - 1

PROJECT ENG. _____ GPY	DESIGNED BY _____ GPY
CHECKED BY _____ MJG	DRAWN BY _____ GPY
PROJECT MGR. _____ MJG	DIVISION CHIEF _____
DATE _____ 11/26/13	FILE _____
SHEET 3 OF 11	

REG	STATE	PROJECT	SHEET NO.	TOTAL SHEETS
2	D.C.	N / A	4	11



MATCH LINE SEE STRIPING PLAN - 1

MATCH LINE SEE STRIPING PLAN - 3

**PAVEMENT MARKING LEGEND**

- (A) 4" SOLID WHITE REFLECTIVE THERMOPLASTIC PAVEMENT MARKING LINE
- (B) 4" YELLOW THERMOPLASTIC PAVEMENT MARKING - SOLID DOUBLE STRIPE
- (C) 12" SOLID WHITE REFLECTIVE THERMOPLASTIC PAVEMENT MARKING LINE
- (D) 4" WHITE REFLECTIVE THERMOPLASTIC PAVEMENT MARKING (2' STRIPE/4' GAP/2' STRIPE)
- (E) 6" SOLID WHITE REFLECTIVE THERMOPLASTIC PAVEMENT MARKING LINE
- (F) 6" SOLID WHITE REFLECTIVE THERMOPLASTIC PAVEMENT MARKING LINE ALIGNED WITH NO PARKING SIGN

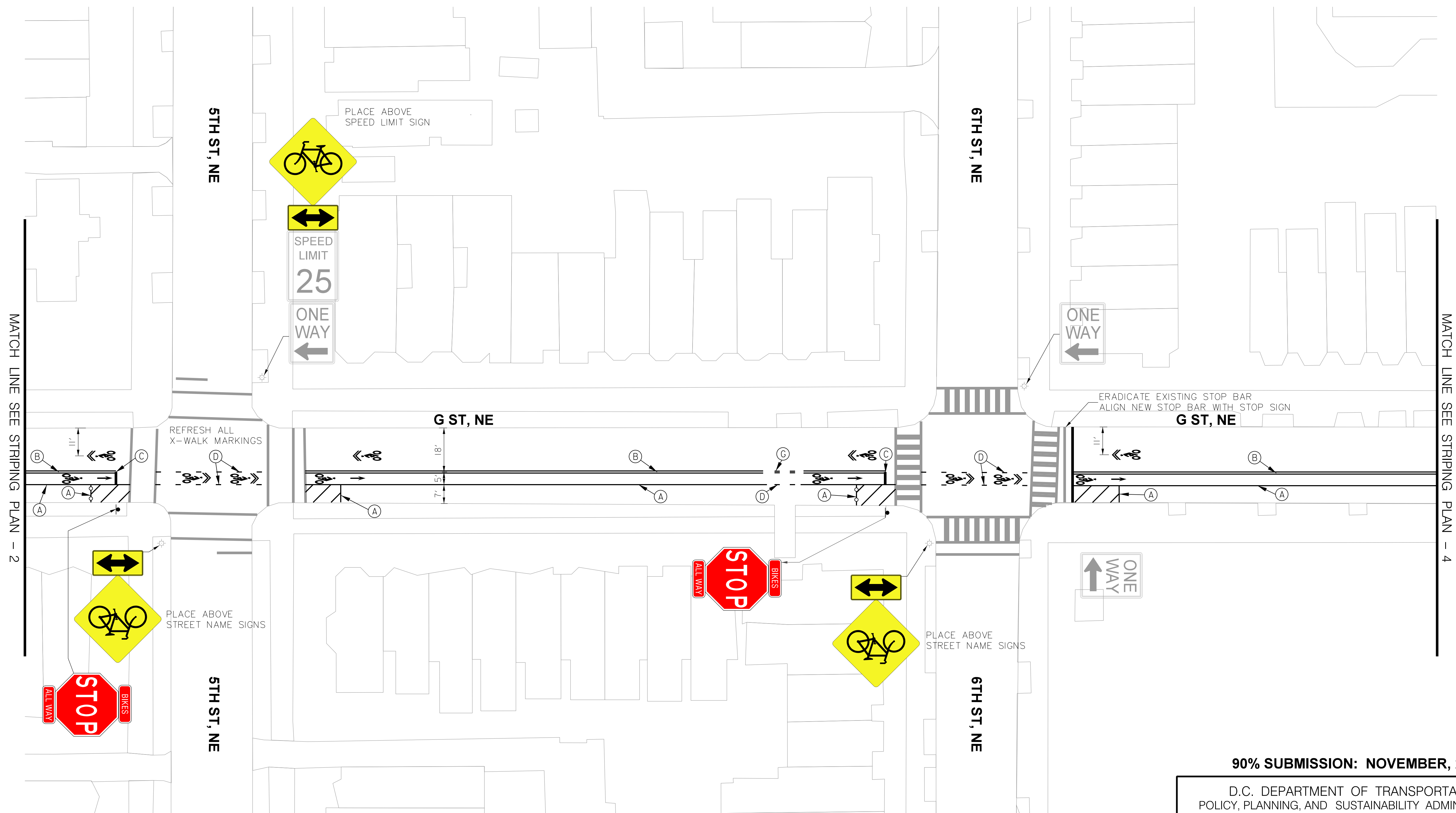


NO.	DESCRIPTION	NAME	DATE

**90% SUBMISSION: NOVEMBER, 2013**

D.C. DEPARTMENT OF TRANSPORTATION POLICY, PLANNING, AND SUSTAINABILITY ADMINISTRATION BICYCLE AND PEDESTRIAN PROGRAM	
<b>G ST, N.E. BICYCLE LANE PROJECT          FROM 2ND ST, N.E.          TO MARYLAND AVE, N.E.</b>	PROJECT ENG. _____ GPY DESIGNED BY _____ GPY CHECKED BY _____ MAG DRAWN BY _____ GPY PROJECT MGR. _____ MAG
<b>STRIPING AND SIGNING PLAN - 2</b>	DIMENSION CHIEF DATE 11/26/13 FILE SHEET 4 OF 11

REG	STATE	PROJECT	SHEET NO.	TOTAL SHEETS
2	D.C.	N / A	5	11



**PAVEMENT MARKING LEGEND**

- (A) 4" SOLID WHITE REFLECTIVE THERMOPLASTIC PAVEMENT MARKING LINE
- (B) 4" YELLOW THERMOPLASTIC PAVEMENT MARKING - SOLID DOUBLE STRIPE
- (C) 12" SOLID WHITE REFLECTIVE THERMOPLASTIC PAVEMENT MARKING LINE
- (D) 4" WHITE REFLECTIVE THERMOPLASTIC PAVEMENT MARKING (2' STRIPE/4' GAP/2' STRIPE)
- (E) 6" SOLID WHITE REFLECTIVE THERMOPLASTIC PAVEMENT MARKING LINE
- (F) 6" SOLID WHITE REFLECTIVE THERMOPLASTIC PAVEMENT MARKING LINE ALIGNED WITH NO PARKING SIGN
- (G) 4" YELLOW THERMOPLASTIC PAVEMENT MARKING - DOUBLE DASHED (2' STRIPE/4' GAP/2' STRIPE)



NO.	DESCRIPTION	NAME	DATE
REVISIONS			

**90% SUBMISSION: NOVEMBER, 2013**

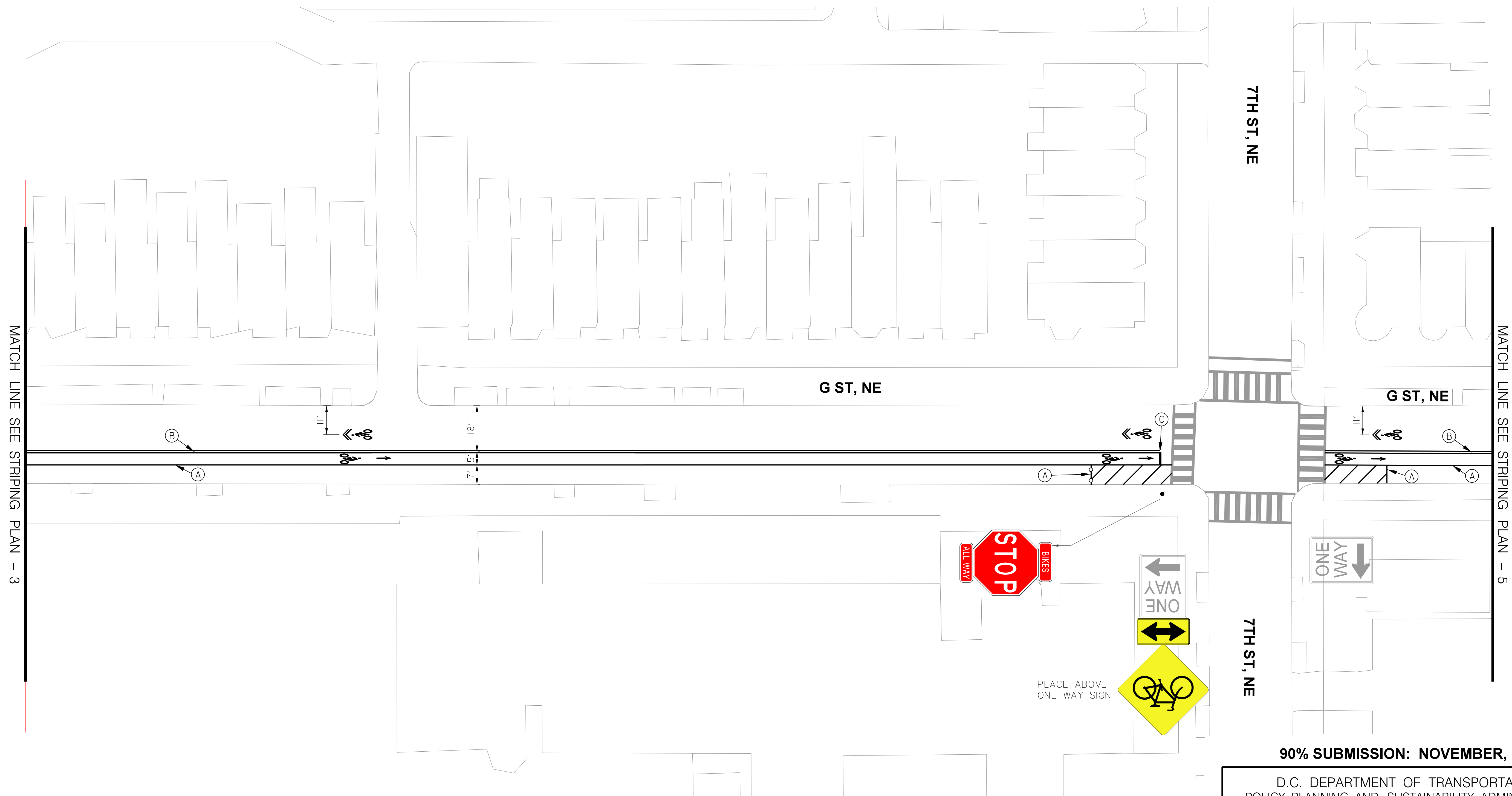
D.C. DEPARTMENT OF TRANSPORTATION  
POLICY, PLANNING, AND SUSTAINABILITY ADMINISTRATION  
BICYCLE AND PEDESTRIAN PROGRAM

G ST, N.E. BICYCLE LANE PROJECT  
FROM 2ND ST, N.E.  
TO MARYLAND AVE, N.E.

STRIPING AND SIGNING PLAN - 3

PROJECT ENG. _____ GPY	DESIGNED BY _____ GPY	CHECKED BY _____ M.J.G.	DRAWN BY _____ GPY	PROJECT MGR. _____ M.J.G.
DIVISION CHIEF				DATE _____ 11/26/13
				FILE _____
				SHEET 5 OF 11

REG	STATE	PROJECT	SHEET NO.	TOTAL SHEETS
2	D.C.	N / A	6	11



PAVEMENT MARKING LEGEND

- (A) 4" SOLID WHITE REFLECTIVE THERMOPLASTIC PAVEMENT MARKING LINE
- (B) 4" YELLOW THERMOPLASTIC PAVEMENT MARKING - SOLID DOUBLE STRIPE
- (C) 12" SOLID WHITE REFLECTIVE THERMOPLASTIC PAVEMENT MARKING LINE
- (D) 4" WHITE REFLECTIVE THERMOPLASTIC PAVEMENT MARKING (2' STRIPE/4' GAP/2' STRIPE)
- (E) 6" SOLID WHITE REFLECTIVE THERMOPLASTIC PAVEMENT MARKING LINE
- (F) 6" SOLID WHITE REFLECTIVE THERMOPLASTIC PAVEMENT MARKING LINE ALIGNED WITH NO PARKING SIGN

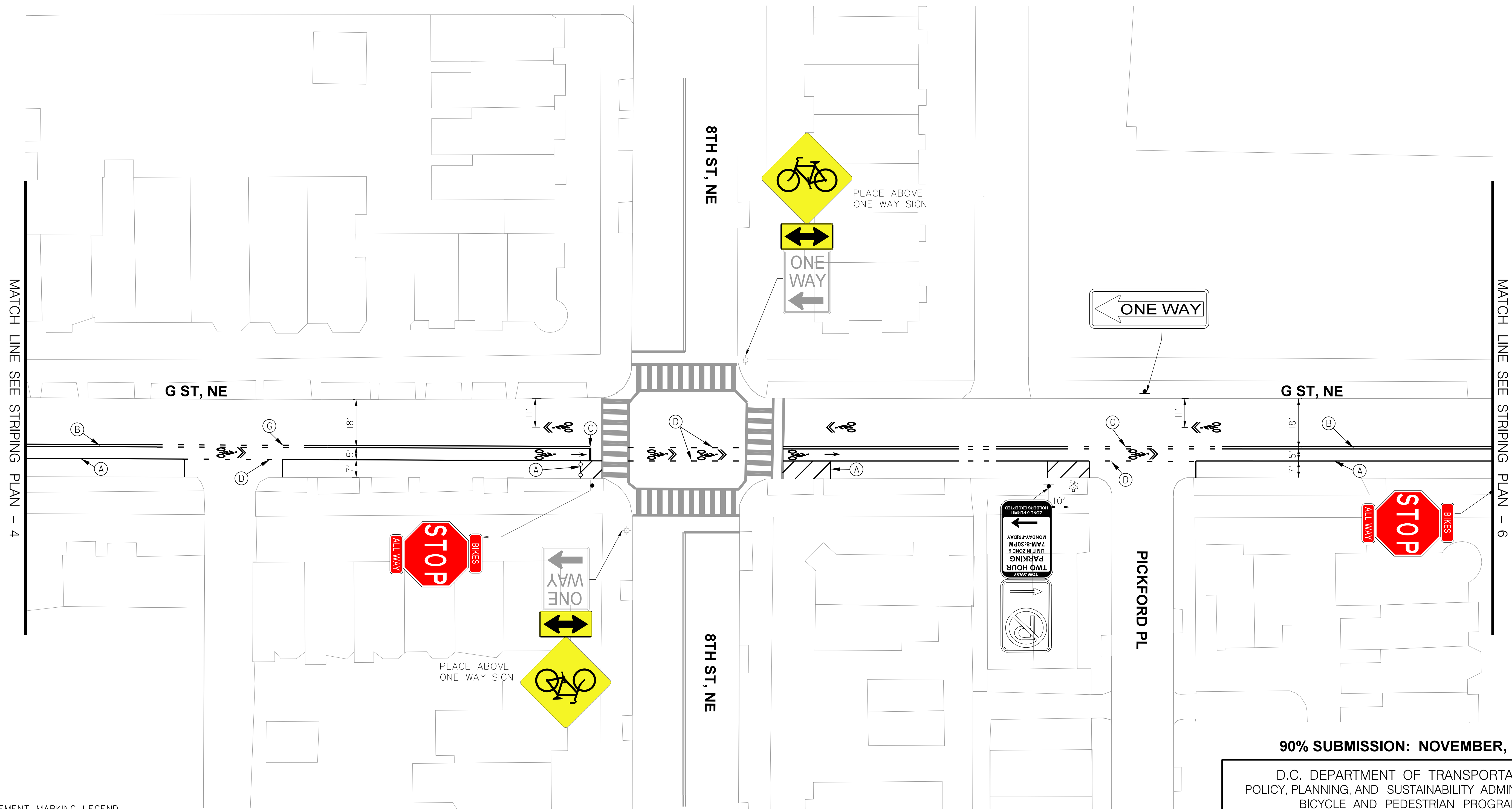


NO.	DESCRIPTION	NAME	DATE
REVISIONS			

90% SUBMISSION: NOVEMBER, 2013

D.C. DEPARTMENT OF TRANSPORTATION POLICY, PLANNING, AND SUSTAINABILITY ADMINISTRATION BICYCLE AND PEDESTRIAN PROGRAM	
G ST, N.E. BICYCLE LANE PROJECT FROM 2ND ST, N.E. TO MARYLAND AVE, N.E.	PROJECT ENG. _____ GPY DESIGNED BY _____ GPY CHECKED BY _____ MJG DRAWN BY _____ GPY PROJECT MGR. _____ MJG
STRIPING AND SIGNING PLAN - 4	DIVISION CHIEF DATE 11/26/13 FILE SHEET 6 OF 11

REG	STATE	PROJECT	SHEET NO.	TOTAL SHEETS
2	D.C.	N / A	7	11



**PAVEMENT MARKING LEGEND**

- (A) 4" SOLID WHITE REFLECTIVE THERMOPLASTIC PAVEMENT MARKING LINE
- (B) 4" YELLOW THERMOPLASTIC PAVEMENT MARKING - SOLID DOUBLE STRIPE
- (C) 12" SOLID WHITE REFLECTIVE THERMOPLASTIC PAVEMENT MARKING LINE
- (D) 4" WHITE REFLECTIVE THERMOPLASTIC PAVEMENT MARKING (2' STRIPE/4' GAP/2' STRIPE)
- (E) 6" SOLID WHITE REFLECTIVE THERMOPLASTIC PAVEMENT MARKING LINE
- (F) 6" SOLID WHITE REFLECTIVE THERMOPLASTIC PAVEMENT MARKING LINE ALIGNED WITH NO PARKING SIGN
- (G) 4" YELLOW THERMOPLASTIC PAVEMENT MARKING - DOUBLE DASHED (2' STRIPE/4' GAP/2' STRIPE)



NO.	DESCRIPTION	NAME	DATE

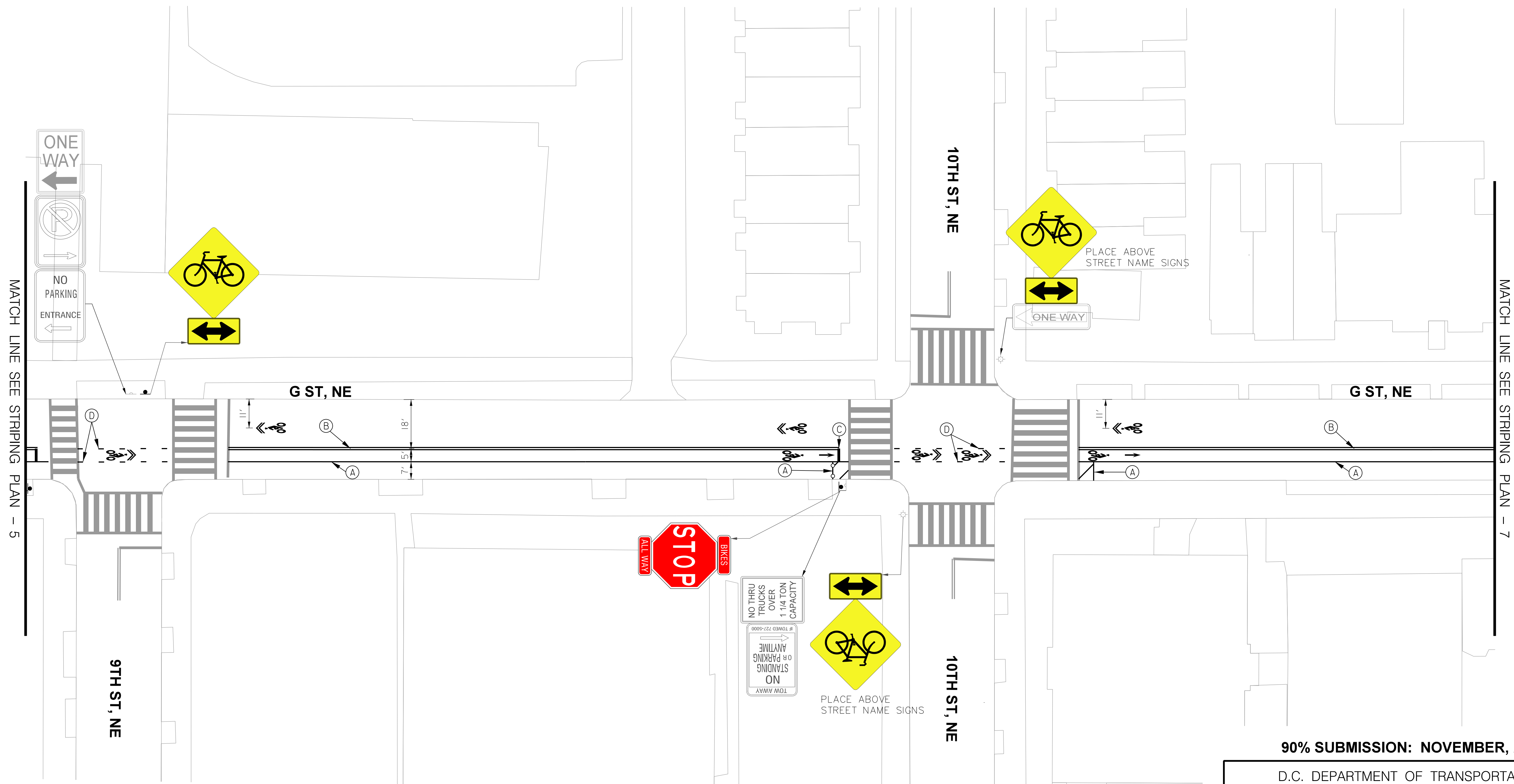
**90% SUBMISSION: NOVEMBER, 2013**

D.C. DEPARTMENT OF TRANSPORTATION  
POLICY, PLANNING, AND SUSTAINABILITY ADMINISTRATION  
BICYCLE AND PEDESTRIAN PROGRAM

G ST, N.E. BICYCLE LANE PROJECT  
FROM 2ND ST, N.E.  
TO MARYLAND AVE, N.E.

STRIPING AND SIGNING PLAN - 5

PROJECT ENG. _____ GPY	DIVISION CHIEF
DESIGNED BY _____ GPY	DATE 11/26/13
CHECKED BY _____ MAG	FILE _____
DRAWN BY _____ GPY	SHEET 7 OF 11
PROJECT MGR. _____ MAG	



**PAVEMENT MARKING LEGEND**

- (A) 4" SOLID WHITE REFLECTIVE THERMOPLASTIC PAVEMENT MARKING LINE
- (B) 4" YELLOW THERMOPLASTIC PAVEMENT MARKING - SOLID DOUBLE STRIPE
- (C) 12" SOLID WHITE REFLECTIVE THERMOPLASTIC PAVEMENT MARKING LINE
- (D) 4" WHITE REFLECTIVE THERMOPLASTIC PAVEMENT MARKING (2' STRIPE/4' GAP/2' STRIPE)
- (E) 6" SOLID WHITE REFLECTIVE THERMOPLASTIC PAVEMENT MARKING LINE
- (F) 6" SOLID WHITE REFLECTIVE THERMOPLASTIC PAVEMENT MARKING LINE ALIGNED WITH NO PARKING SIGN



NO.	DESCRIPTION	NAME	DATE

**90% SUBMISSION: NOVEMBER, 2013**

D.C. DEPARTMENT OF TRANSPORTATION  
POLICY, PLANNING, AND SUSTAINABILITY ADMINISTRATION  
BICYCLE AND PEDESTRIAN PROGRAM

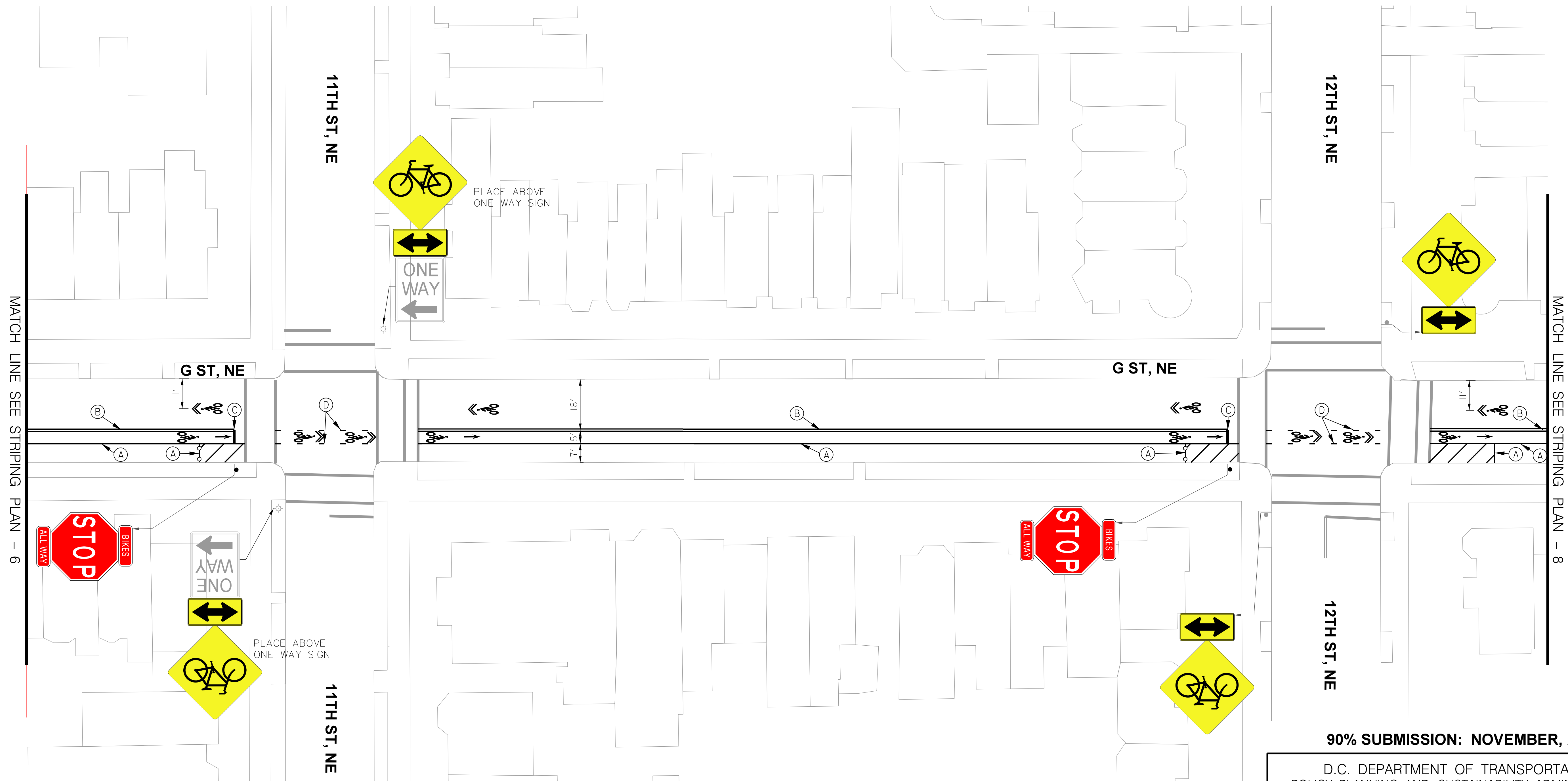
G ST, N.E. BICYCLE LANE PROJECT  
FROM 2ND ST, N.E.  
TO MARYLAND AVE, N.E.

STRIPING AND SIGNING PLAN - 6

PROJECT ENG. _____ GPY	DESIGNED BY _____ GPY
CHECKED BY _____ MAG	DRAWN BY _____ GPY
PROJECT MGR. _____ MAG	DIVISION CHIEF _____
DATE _____ 11/26/13	FILE _____
SHEET 8 OF 11	



REG	STATE	PROJECT	SHEET NO.	TOTAL SHEETS
2	D.C.	N / A	9	11



MATCH LINE SEE STRIPING PLAN - 6

MATCH LINE SEE STRIPING PLAN - 8

**PAVEMENT MARKING LEGEND**

- (A) 4" SOLID WHITE REFLECTIVE THERMOPLASTIC PAVEMENT MARKING LINE
- (B) 4" YELLOW THERMOPLASTIC PAVEMENT MARKING - SOLID DOUBLE STRIPE
- (C) 12" SOLID WHITE REFLECTIVE THERMOPLASTIC PAVEMENT MARKING LINE
- (D) 4" WHITE REFLECTIVE THERMOPLASTIC PAVEMENT MARKING (2' STRIPE/4' GAP/2' STRIPE)
- (E) 6" SOLID WHITE REFLECTIVE THERMOPLASTIC PAVEMENT MARKING LINE
- (F) 6" SOLID WHITE REFLECTIVE THERMOPLASTIC PAVEMENT MARKING LINE ALIGNED WITH NO PARKING SIGN



NO.	DESCRIPTION	NAME	DATE
REVISIONS			

**90% SUBMISSION: NOVEMBER, 2013**

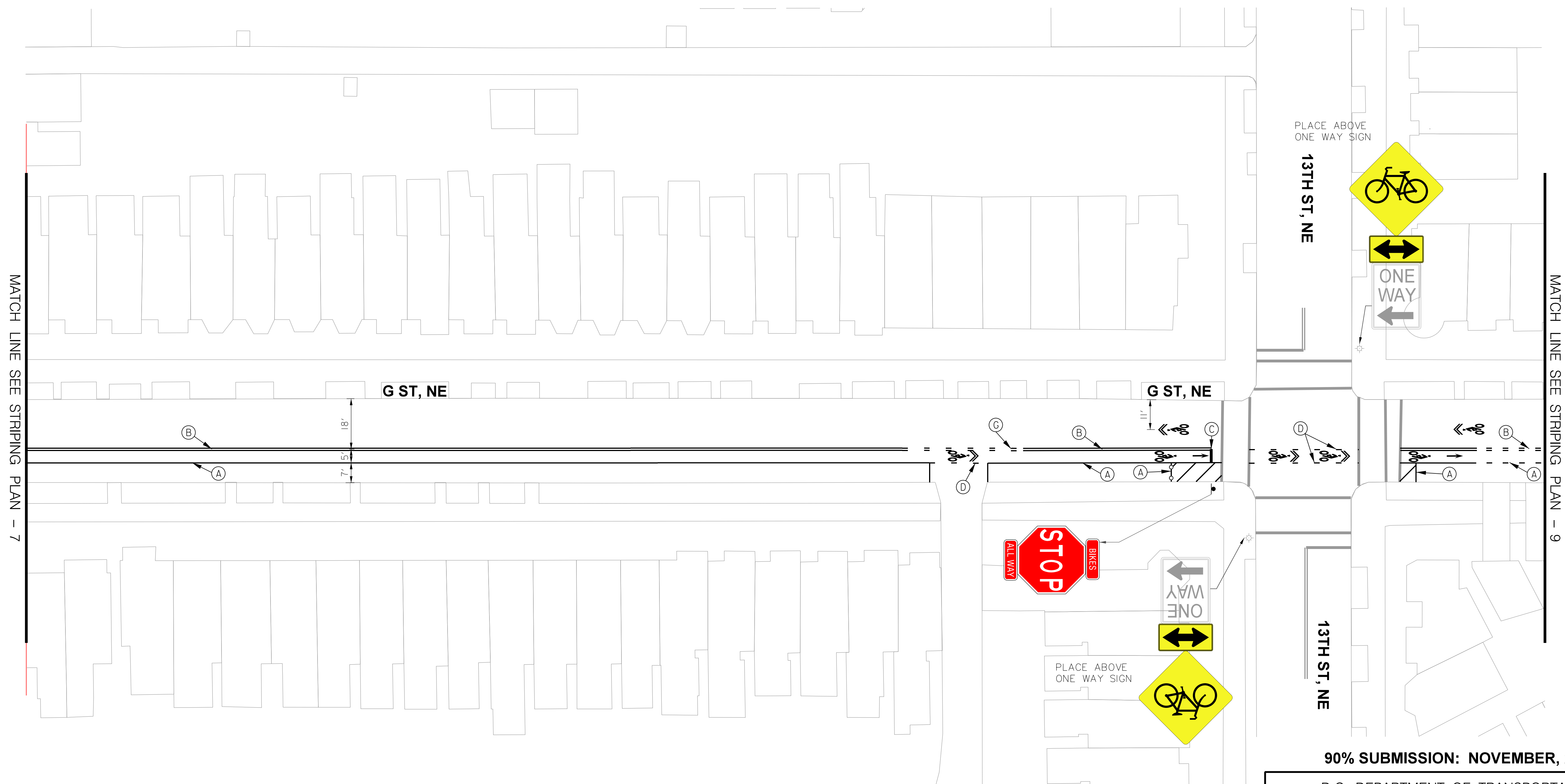
D.C. DEPARTMENT OF TRANSPORTATION  
POLICY, PLANNING, AND SUSTAINABILITY ADMINISTRATION  
BICYCLE AND PEDESTRIAN PROGRAM

G ST, N.E. BICYCLE LANE PROJECT  
FROM 2ND ST, N.E.  
TO MARYLAND AVE, N.E.

STRIPING AND SIGNING PLAN - 7

PROJECT ENG. _____	DESIGNED BY _____
CHECKED BY _____	DRAWN BY _____
PROJECT MGR. _____	DIVISION CHIEF _____
DATE _____	FILE _____
SHEET 9 OF 11	

REG	STATE	PROJECT	SHEET NO.	TOTAL SHEETS
2	D.C.	N / A	10	11



**PAVEMENT MARKING LEGEND**

- (A) 4" SOLID WHITE REFLECTIVE THERMOPLASTIC PAVEMENT MARKING LINE
- (B) 4" YELLOW THERMOPLASTIC PAVEMENT MARKING - SOLID DOUBLE STRIPE
- (C) 12" SOLID WHITE REFLECTIVE THERMOPLASTIC PAVEMENT MARKING LINE
- (D) 4" WHITE REFLECTIVE THERMOPLASTIC PAVEMENT MARKING (2' STRIPE/4' GAP/2' STRIPE)
- (E) 6" SOLID WHITE REFLECTIVE THERMOPLASTIC PAVEMENT MARKING LINE
- (F) 6" SOLID WHITE REFLECTIVE THERMOPLASTIC PAVEMENT MARKING LINE ALIGNED WITH NO PARKING SIGN



NO.	DESCRIPTION	NAME	DATE

**90% SUBMISSION: NOVEMBER, 2013**

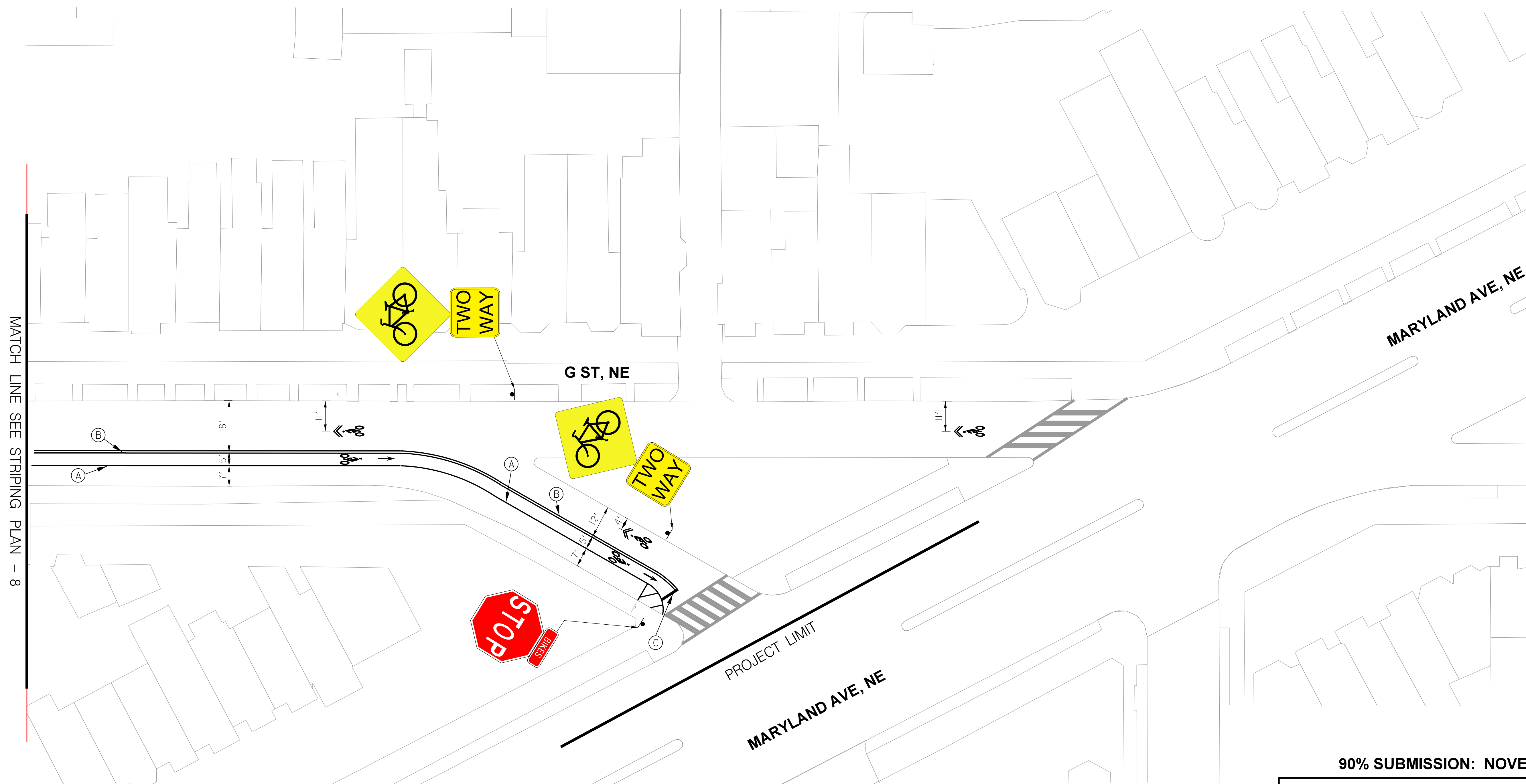
D.C. DEPARTMENT OF TRANSPORTATION  
POLICY, PLANNING, AND SUSTAINABILITY ADMINISTRATION  
BICYCLE AND PEDESTRIAN PROGRAM

G ST, N.E. BICYCLE LANE PROJECT  
FROM 2ND ST, N.E.  
TO MARYLAND AVE, N.E.

STRIPING AND SIGNING PLAN - 8

PROJECT ENG. _____ GPY	DIVISION CHIEF
DESIGNED BY _____ GPY	DATE 11/26/13
CHECKED BY _____ MAG	FILE _____
DRAWN BY _____ GPY	SHEET 10 OF 11
PROJECT MGR. _____ MAG	

REG	STATE	PROJECT	SHEET NO.	TOTAL SHEETS
2	D.C.	N / A	11	11



MATCH LINE SEE STRIPING PLAN - 8

**PAVEMENT MARKING LEGEND**

- (A) 4" SOLID WHITE REFLECTIVE THERMOPLASTIC PAVEMENT MARKING LINE
- (B) 4" YELLOW THERMOPLASTIC PAVEMENT MARKING - SOLID DOUBLE STRIPE
- (C) 12" SOLID WHITE REFLECTIVE THERMOPLASTIC PAVEMENT MARKING LINE
- (D) 4" WHITE REFLECTIVE THERMOPLASTIC PAVEMENT MARKING (2' STRIPE/4' GAP/2' STRIPE)
- (E) 6" SOLID WHITE REFLECTIVE THERMOPLASTIC PAVEMENT MARKING LINE
- (F) 6" SOLID WHITE REFLECTIVE THERMOPLASTIC PAVEMENT MARKING LINE ALIGNED WITH NO PARKING SIGN
- (G) 4" YELLOW THERMOPLASTIC PAVEMENT MARKING - DOUBLE DASHED (2' STRIPE/4' GAP/2' STRIPE)



NO.	DESCRIPTION	NAME	DATE

**90% SUBMISSION: NOVEMBER, 2013**

D.C. DEPARTMENT OF TRANSPORTATION  
POLICY, PLANNING, AND SUSTAINABILITY ADMINISTRATION  
BICYCLE AND PEDESTRIAN PROGRAM

G ST, N.E. BICYCLE LANE PROJECT  
FROM 2ND ST, N.E.  
TO MARYLAND AVE, N.E.

STRIPING AND SIGNING PLAN - 9

PROJECT ENG. _____ GPY	DESIGNED BY _____ GPY	CHECKED BY _____ MAG	DRAWN BY _____ GPY	PROJECT MGR. _____ MAG
DIVISION CHIEF				
DATE	11/26/13			
FILE				
SHEET	11	OF	11	